

structo

WALL
SYSTEMS



FITS PERFECTLY WITH WALL
PANELS

DOOR—STX

Maximum height of the product if side panels are in one piece: * coloured	2790 mm*
Maximum height of the product if side panels are divided into two parts:	4000 mm
Maximum external dimensions of the door frame (width x height): * with SU-050 door panel	1090 x 2390 mm*
Soundproofing: * see Technical Description for detailed information	Rw = 38 - 44 dB*
Standard door frame depths:	95 mm 123 mm



+372 666 5017



info@structo.ee



www.structo.ee

DOOR-STX | TECHNICAL DESCRIPTION



DOOR-STX is a wooden door where door panel is in the same plane as door moldings when viewed from the outside. Fits perfectly with wall panels.

The door can be ordered opening both in and outwards, and in both cases, the door panel is in the same plane as door moldings when viewed from the outside.

Standard single-panel door frame widths are: M7 (690mm), M8 (790mm), M9 (890mm), M10 (990mm).

The standard door frame height is M21 (2090mm). It is also possible to order paired doors, doors with glass openings and doors of special size.

The standard door frame depths are 95mm and 123mm.

The standard door types are:

- SU-050 inwards or outwards opening door (thickness of the door panel is 53mm).
- SU-060 inwards or outwards opening door (thickness of the door panel is 66,5mm).

Outside MDF 10mm door moldings are glued to the frame with splines.

Standard dimensions for outside moldings are:

- 10x70mm (vertical) and 10x85mm (horizontal) in case of inwards opening door.
- 10x60mm (both vertical and horizontal) in case of outwards opening door.

It's possible to order outer moldings up to 1200mm wide. Inner moldings are not included and have to be ordered separately.

We are using following veneers:

- quarter sliced veneer (radial cut) or
- flat cut or plain sliced veneer (tangential cut).

Maximum height of the product if side panels are in one piece: * coloured	2790 mm*
Maximum height of the product if side panels are divided into two parts:	4000 mm
Maximum dimensions of the door frame (width x height): * with SU-050 door panel	1090 x 2390 mm
Minimum solid door panel width:	250 mm
Minimum door panel width with a glass opening:	560 mm

Those veneer strips are then joined together to make spliced veneer faces (wide veneer sheets). Our standard method is book match. It's possible to choose from over 40 different veneer species from Europe, Africa and America.

Thresholds are made of oak. It is also possible to order an automatically descending seal.

Possible coatings for door panels and panels are:

- painted according to RAL, NCS or Tikkurila colour catalogues.
- covered with natural or technical veneer, which may be stained and varnished, varnished with tinted varnish or painted.

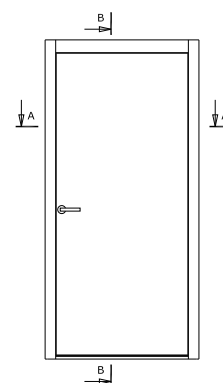
The standard lock case is ASSA 565-50 and the counterpart ASSA 2864. It is also possible to order other lock cases and counterparts.

The standard solution uses Abloy 3248 hinges. Other hinges can also be used (incl. hidden hinges).

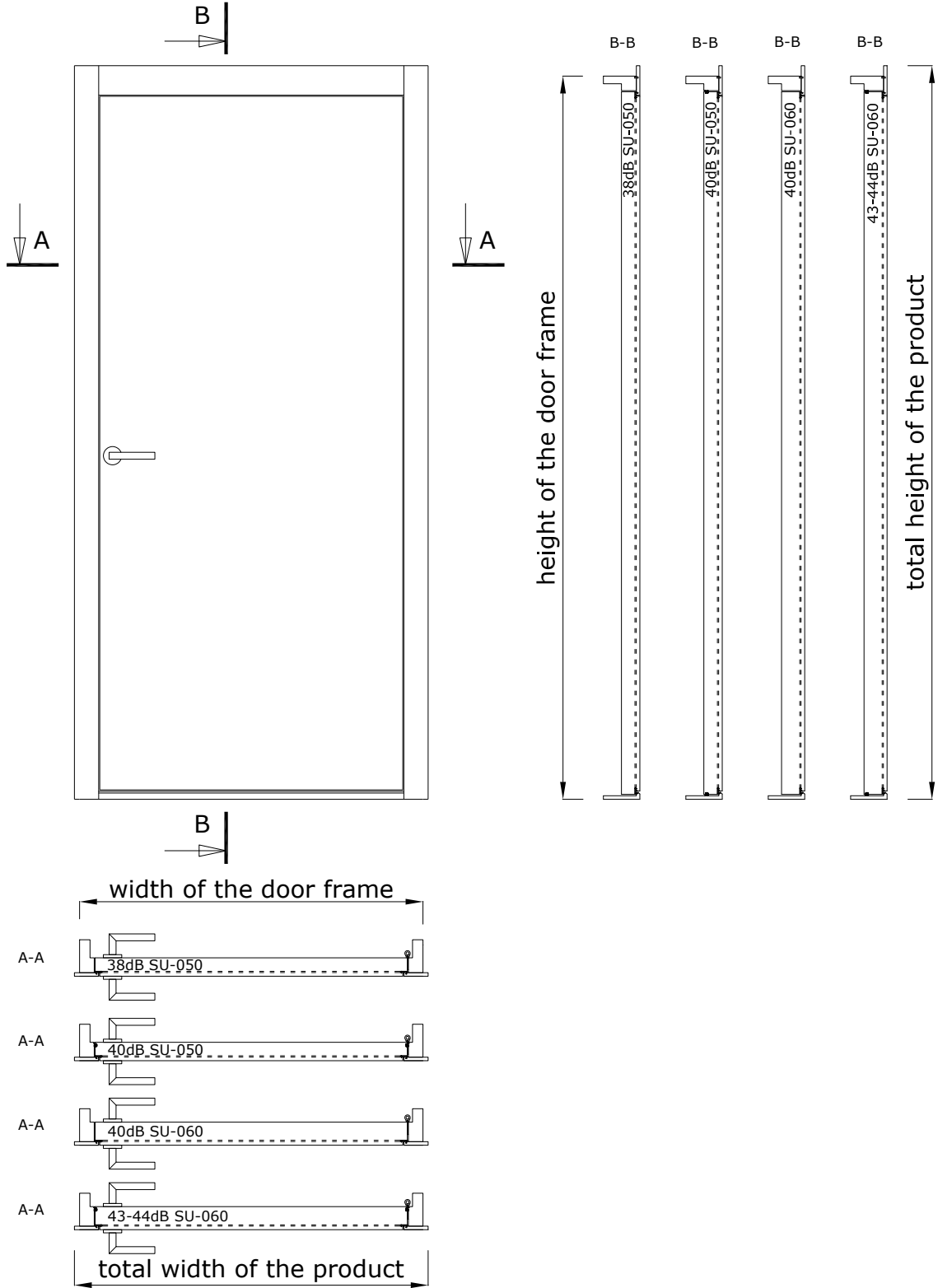
Structures adjacent to the product must be strong enough to allow profiles to be attached to them.

Soundproofing measured in laboratory (Rw) :

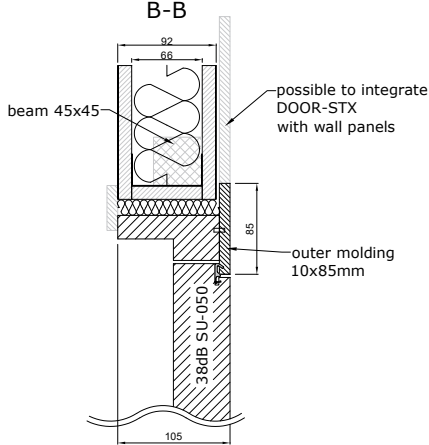
Rw = 38 dB (with SU-050 door panel and oak threshold)
Rw = 40 dB (with SU-050 door panel + additional seal and oak threshold)
Rw = 40 dB (with SU-060 door panel and oak threshold)
Rw = 43-44 dB (with SU-060 door panel + additional seal and oak threshold) Maximum dimensions of the door frame are 990 x 2090 mm for the 44dB SU-060.



DOOR-STX | WITH INWARDS OPENING DOOR

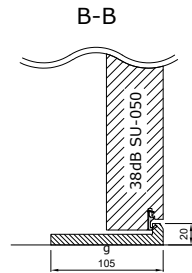


CONNECTION WITH CEILING (95MM DOOR FRAME)

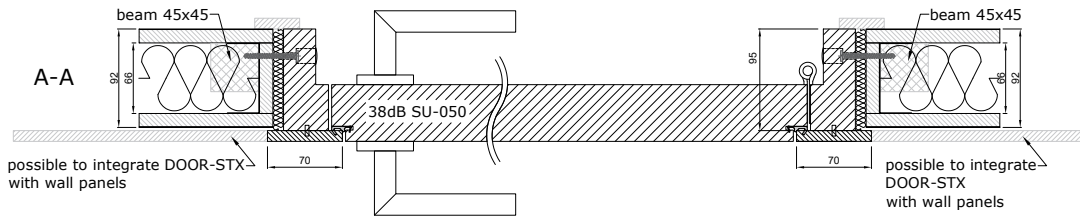


- g - glued connection
- QL3096, RAL9005 black, RAL9003 white, RAL7001 silver gray, RAL8017 bronze
- QL3094, RAL9005 black, RAL9003 white, RAL7001 silver gray, RAL8017 bronze

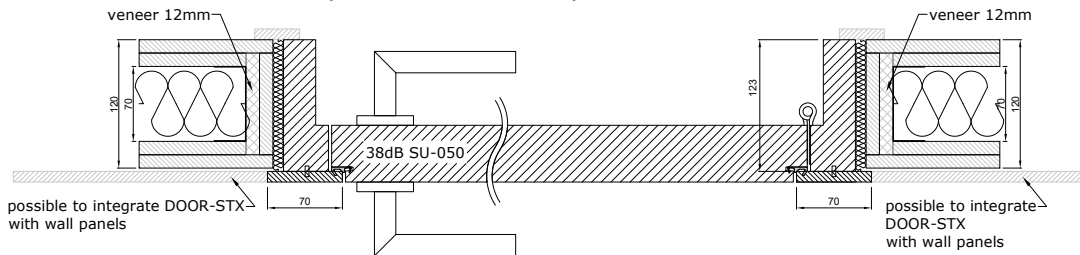
CONNECTION WITH FLOOR (95MM DOOR FRAME)



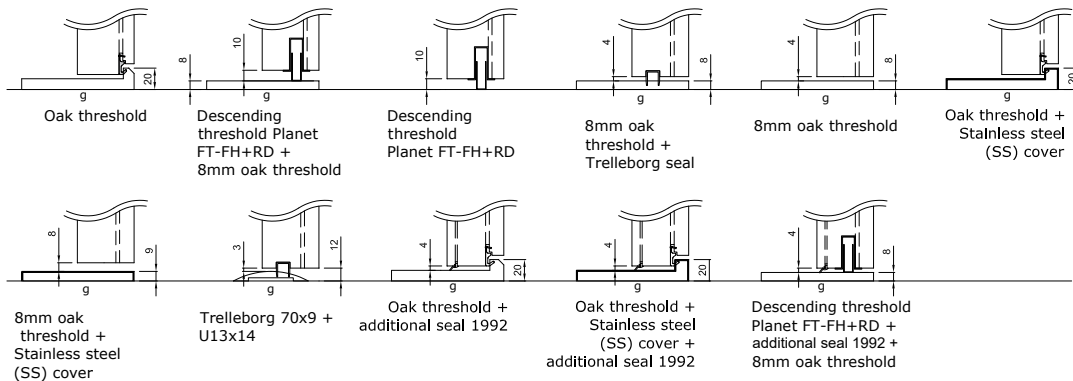
CONNECTION WITH WALL (95MM DOOR FRAME)



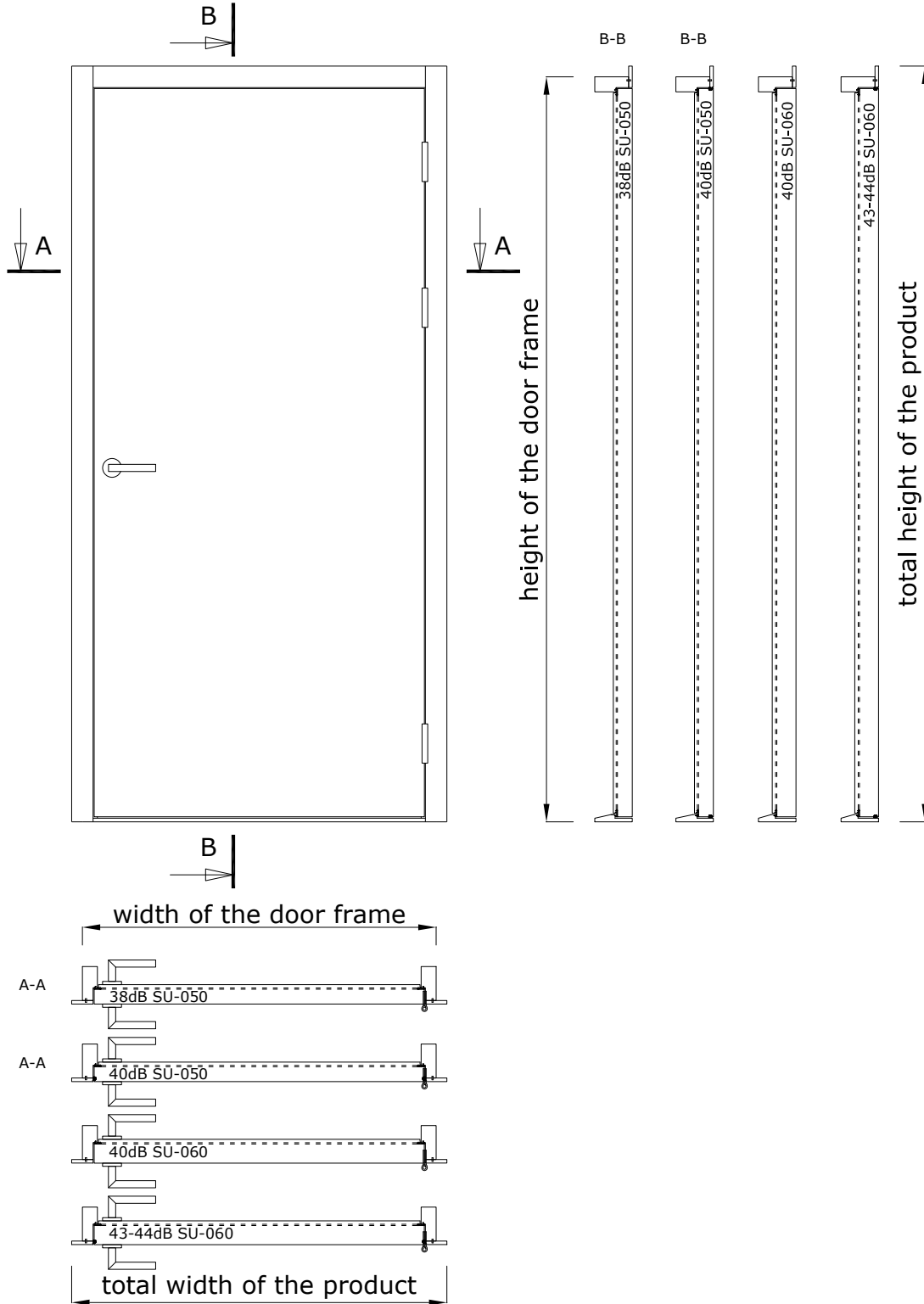
CONNECTION WITH WALL (123MM DOOR FRAME)



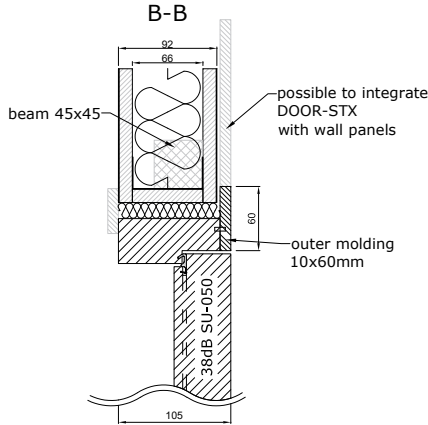
INWARDS OPENING DOOR THRESHOLDS



DOOR-STX | WITH OUTWARDS OPENING DOOR

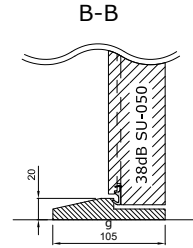


CONNECTION WITH CEILING (95MM DOOR FRAME)

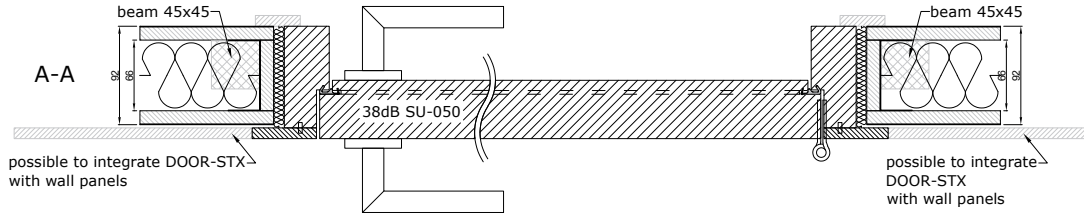


- g - glued connection
- ☞ - QL3096, RAL9005 black, RAL9003 white, RAL7001 silver gray, RAL8017 bronze
- ☞ - QL3094, RAL9005 black, RAL9003 white, RAL7001 silver gray, RAL8017 bronze

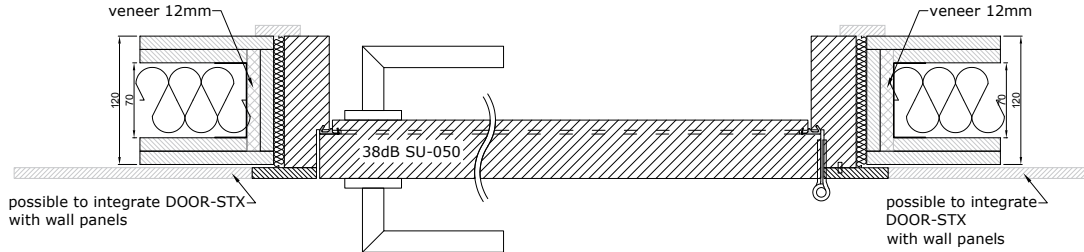
CONNECTION WITH FLOOR (95MM DOOR FRAME)



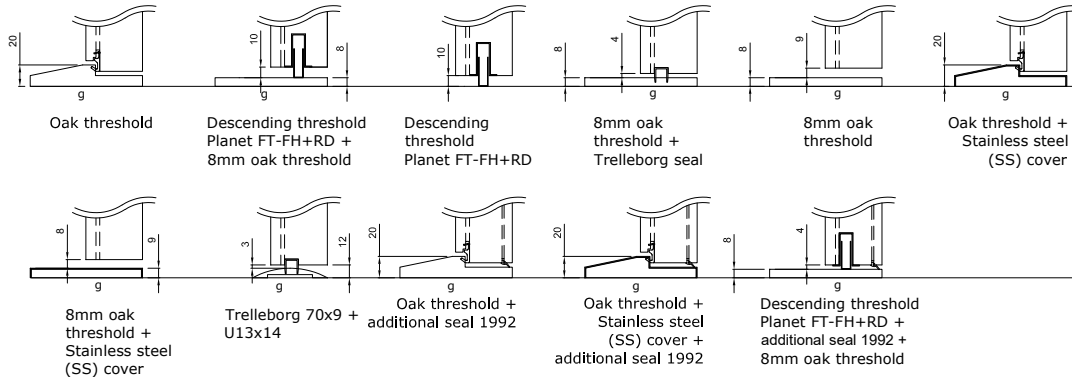
CONNECTION WITH WALL (95MM DOOR FRAME)



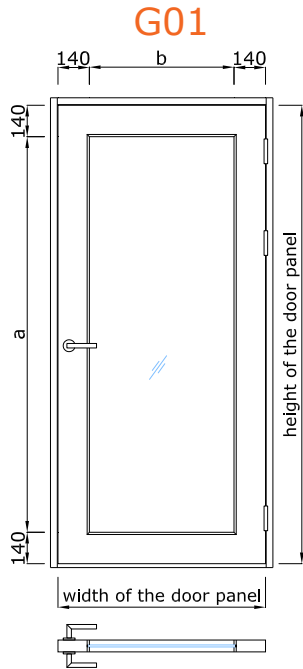
CONNECTION WITH WALL (123MM DOOR FRAME)



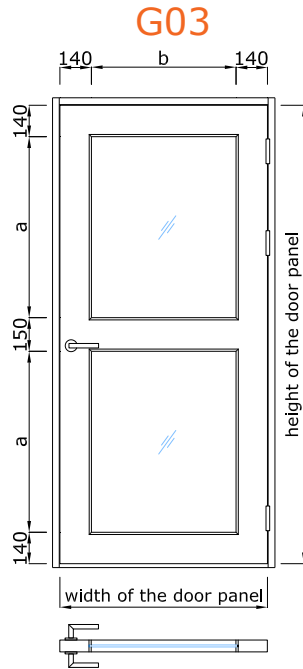
OUTWARDS OPENING DOOR THRESHOLDS



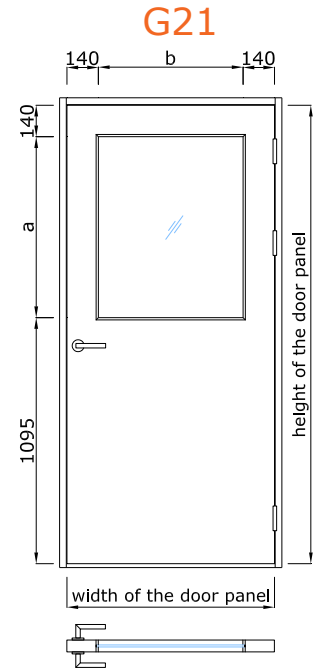
DOOR-STX | DOOR PANELS WITH GLASS OPENINGS



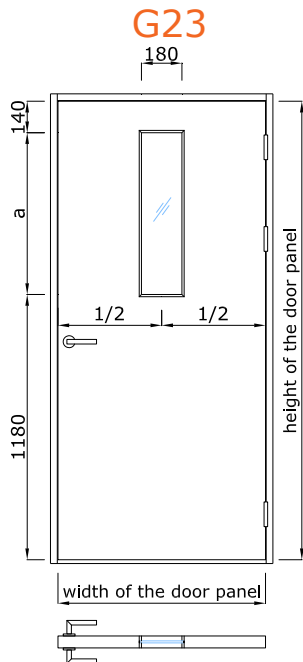
a = height of the door panel - 280mm
 b = width of the door panel - 280mm



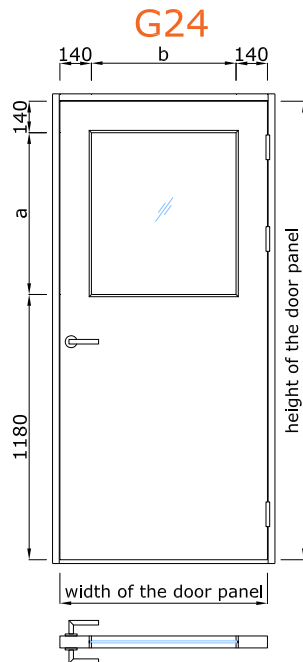
a = (height of the door panel - 430mm) / 2
 b = width of the door panel - 280mm



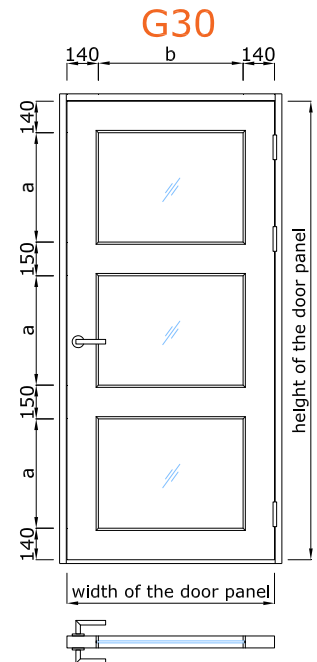
a = height of the door panel - 1235mm
 b = width of the door panel - 280mm



a = height of the door panel - 1320mm



a = height of the door panel - 1320mm
 b = width of the door panel - 280mm



a = (height of the door panel - 580mm) / 3
 b = width of the door panel - 280mm