

structo

WALL
SYSTEMS



FITS PERFECTLY WITH
MODULE GLASS WALLS
AND ELZONE

ALUSLIM-12W

Maximum dimensions of the door frame (width x height):	990 x 2650 mm
Glass thickness:	8 - 10,76 mm



+372 666 5017



info@structo.ee



www.structo.ee

ALUSLIM-12W

TECHNICAL DESCRIPTION



ALUSLIM-12W is a aluminum framed glass door with wooden door frame.

Standard single-panel door frame widths are: M7 (690mm), M8 (790mm), M9 (890mm), M10 (990mm).

The standard door frame height is M21 (2090mm). It is also possible to order paired doors, left or right handed doors and doors of special size.

The standard door frame depths are 92mm and 120mm.

Standard threshold is made of oak. It is also possible to order an automatically descending seal.

Inner and outer moldings are not included and have to be ordered separately.

Possible coatings for door frame are:

- painted according to RAL, NCS or Tikkurila colour catalogues.
- covered with natural or technical veneer, which may be stained and varnished, varnished with tinted varnish or painted.

We are using following veneers:

- quarter sliced veneer (radial cut) or
- flat cut or plain sliced veneer (tangential cut).

Those veneer strips are then joined together to make spliced veneer faces (wide veneer sheets). Our standard method is book match. It's possible to choose from over 40 different veneer species from Europe, Africa and America.

Door panel has only a 12mm thick aluminum frame in which it is possible to use glass or other material with a thickness of 8-10.76 mm. Possible types of glass are tempered, laminated or tempered-laminated.

The surface of the glass can be bright, very bright, mass-tinted, background-painted or matte.

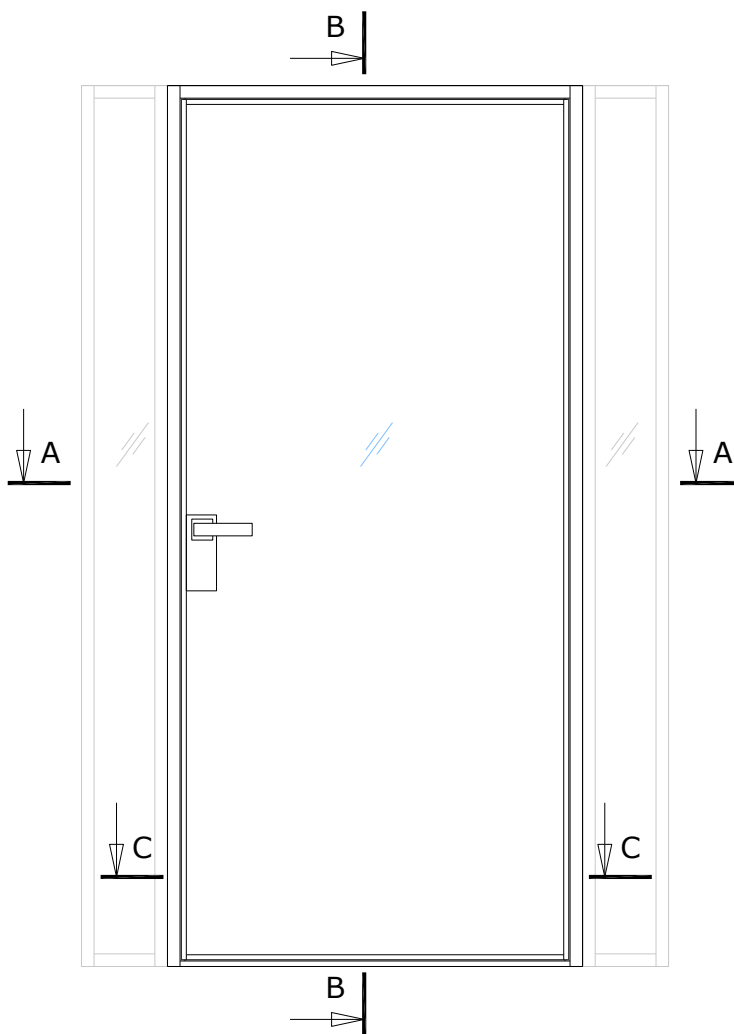
Aluminum decor mouldings can be installed on the glass, which can give the door panel an exciting look.

The standard surface finish of aluminum profiles is natural (silver) anodizing but it is also possible to order a painted surface according to the RAL colour catalogue.

Standard hinges are STRUCTO PIVOT hinges and standard lock case is Valnes E114, but it's also possible to use different lock cases.

Openable stile ELZONE can be installed on one or both sides of ALUSLIM-12W, which is ideal for connectors, switches, cabling, etc. Minimum width of the stiles when installing electrical accessories is 140mm. More information about the stiles under the product "ELZONE".

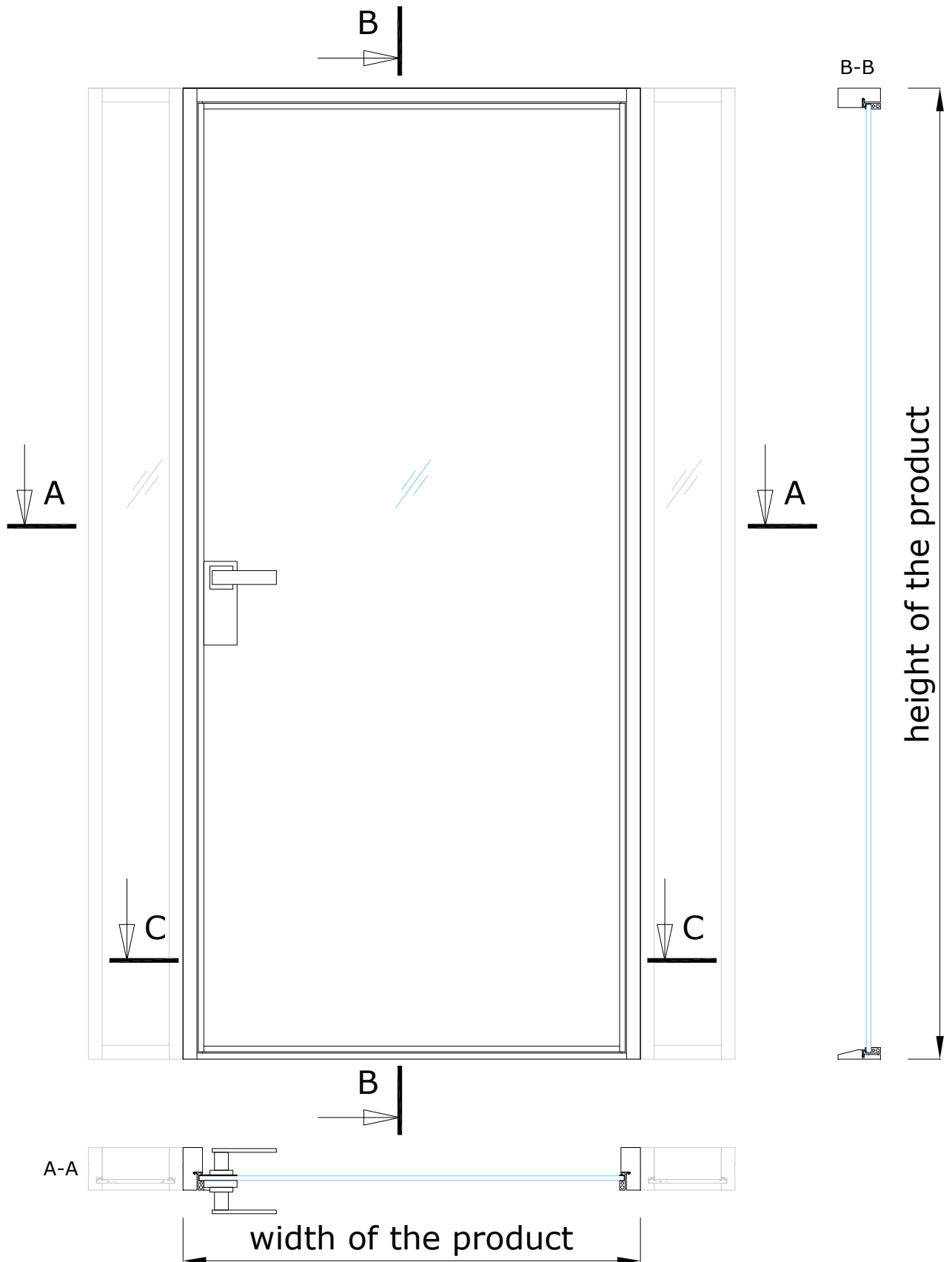
Structures adjacent to the product must be strong enough to allow profiles to be attached to them.



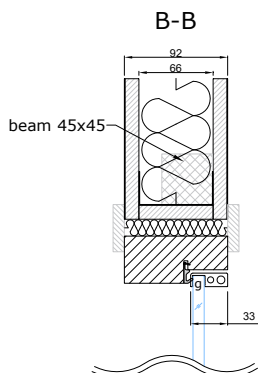
Maximum dimensions of the door frame (width x height):	990 x 2650 mm
Glass thickness:	8 – 10,76 mm

ALUSLIM-12W

STANDARD SOLUTION



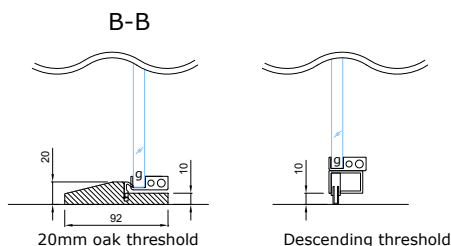
CONNECTION WITH CEILING



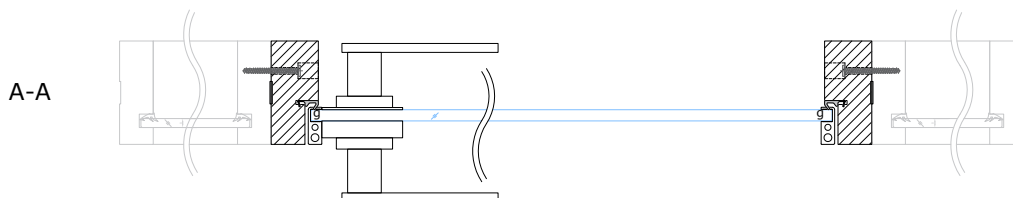
g - glued connection

ℓ₁ - QL3094, RAL9005 black, RAL9003 white, RAL7001 silver gray, RAL8017 bronze
 ℓ₂ - QL3096, RAL9005 black, RAL9003 white, RAL7001 silver gray, RAL8017 bronze

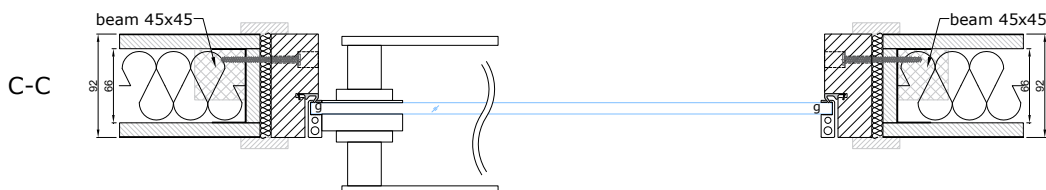
CONNECTION WITH FLOOR



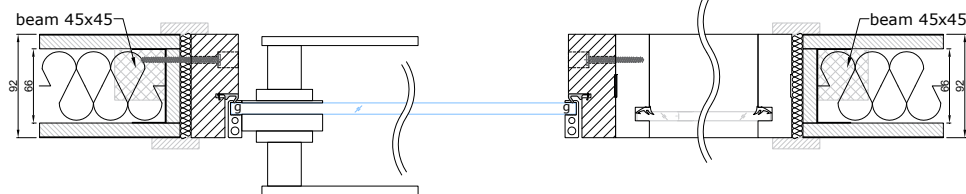
CONNECTION WITH WALL



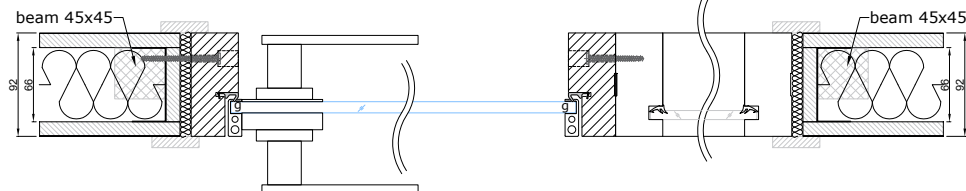
CONNECTION WITH WALL WITHOUT SIDE OVERLIGHTS



CONNECTION WITH MODULE-30



CONNECTION WITH MODULE-42



CONNECTION WITH ELZONE

