

structo

WALL
SYSTEMS



FITS PERFECTLY WITH
MODULE GLASS WALLS
AND ELZONE

DOOR— **M**

Maximum dimensions of the door frame (width x height):	1090 x 2390 mm*
* with SU-010 or SU-050 door panel	

Maximum dimensions of the door frame (width x height):	990 x 2390 mm*
* with SU-060 door panel	



+372 666 5017



info@structo.ee



www.structo.ee

DOOR-M is a wooden door with rebated edge.

Standard single-panel door frame widths are: M7 (690mm), M8 (790mm), M9 (890mm), M10 (990mm).

The standard door frame height is M21 (2090mm). It is also possible to order paired doors, left or right handed doors, doors with glass openings and doors of special size.

The standard door frame depths are 92mm and 120mm.

The standard door types are:

- SU-010 (thickness of the door panel is 45mm).
- SU-050 (thickness of the door panel is 54,5mm).
- SU-060 (thickness of the door panel is 66,5mm).

The thresholds are made of oak. It is also possible to order an automatically descending seal.

Inner and outer moldings are not included and have to be ordered separately.

Possible coatings for door panels and panels are:

- painted according to RAL, NCS or Tikkurila colour catalogues.
- covered with natural or technical veneer, which may be stained and varnished, varnished with tinted varnish or painted.
- laminated (the edges of the door panel are either veneered or painted).

We are using following veneers:

- quarter sliced veneer (radial cut) or
- flat cut or plain sliced veneer (tangential cut).

Maximum dimensions of the door frame (width x height):

1090 x 2390 mm*

* with SU-010 or SU-050 door panel

Maximum dimensions of the door frame (width x height):

990 x 2390 mm*

* with SU-060 door panel

Minimum solid door panel width:

250 mm

Minimum door panel width with a glass opening:

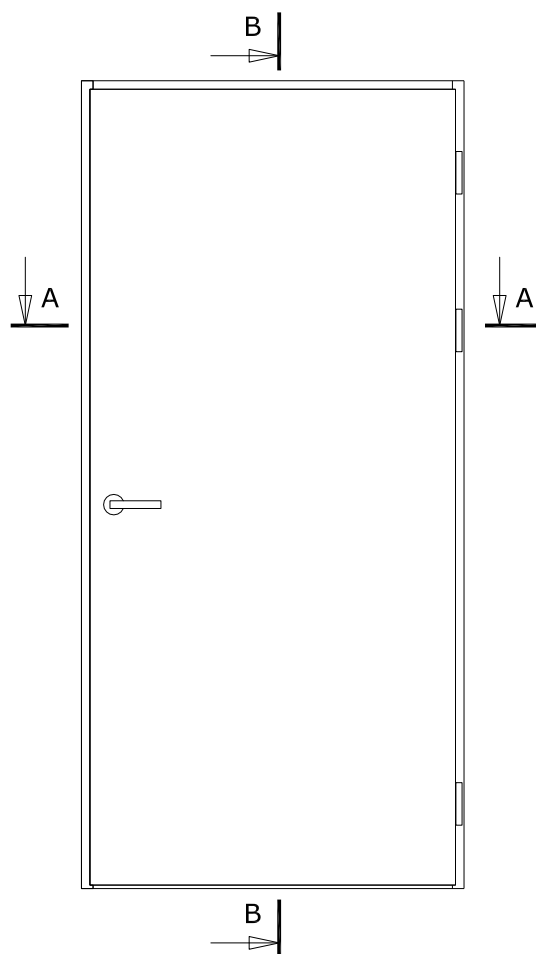
560 mm

Those veneer strips are then joined together to make spliced veneer faces (wide veneer sheets). Our standard method is book match. It's possible to choose from over 40 different veneer species from Europe, Africa and America.

The standard lock case is ASSA 565-50 and the counterpart ASSA 2864. It is also possible to order other lock cases and counterparts.

The standard solution uses NTR 110 hinges. Other hinges can also be used (incl. hidden hinges).

Structures adjacent to the product must be strong enough to allow profiles to be attached to them.



+372 666 5017

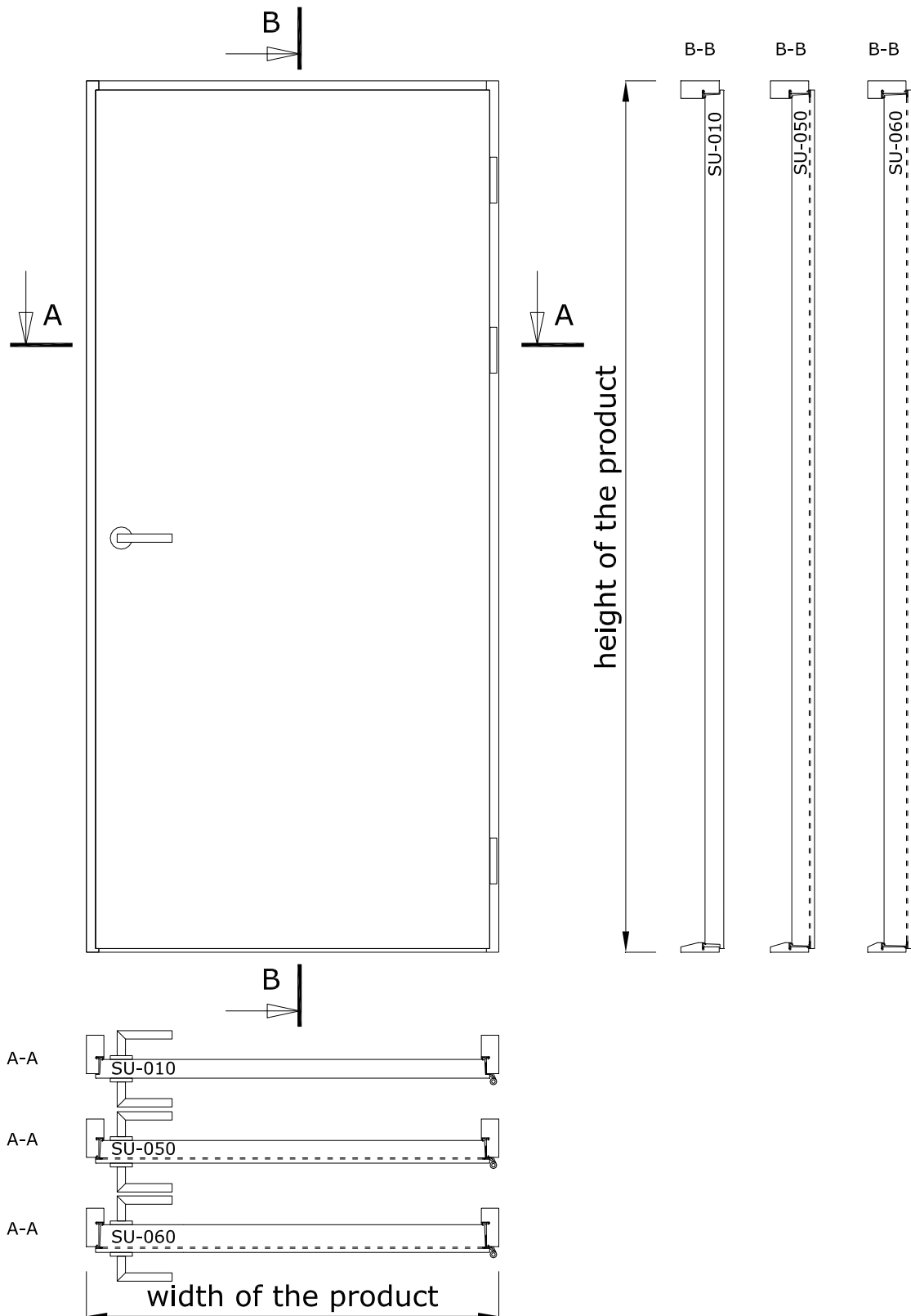


info@structo.ee



www.structo.ee

DOOR- M | STANDARD SOLUTION



+372 666 5017

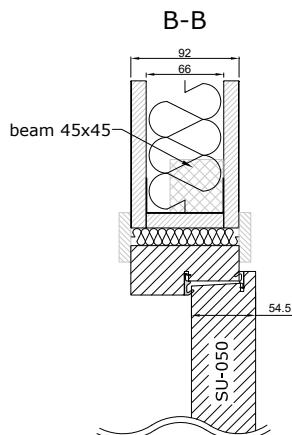


info@structo.ee



www.structo.ee

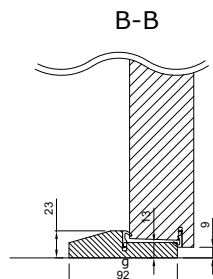
CONNECTION WITH CEILING



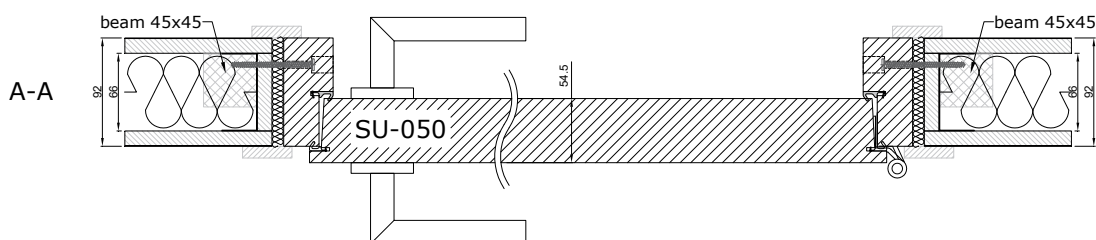
g - glued connection

- △ - QL3096, RAL9005 black, RAL9003 white, RAL7001 silver gray, RAL8017 bronze
- △ - QL3094, RAL9005 black, RAL9003 white, RAL7001 silver gray, RAL8017 bronze

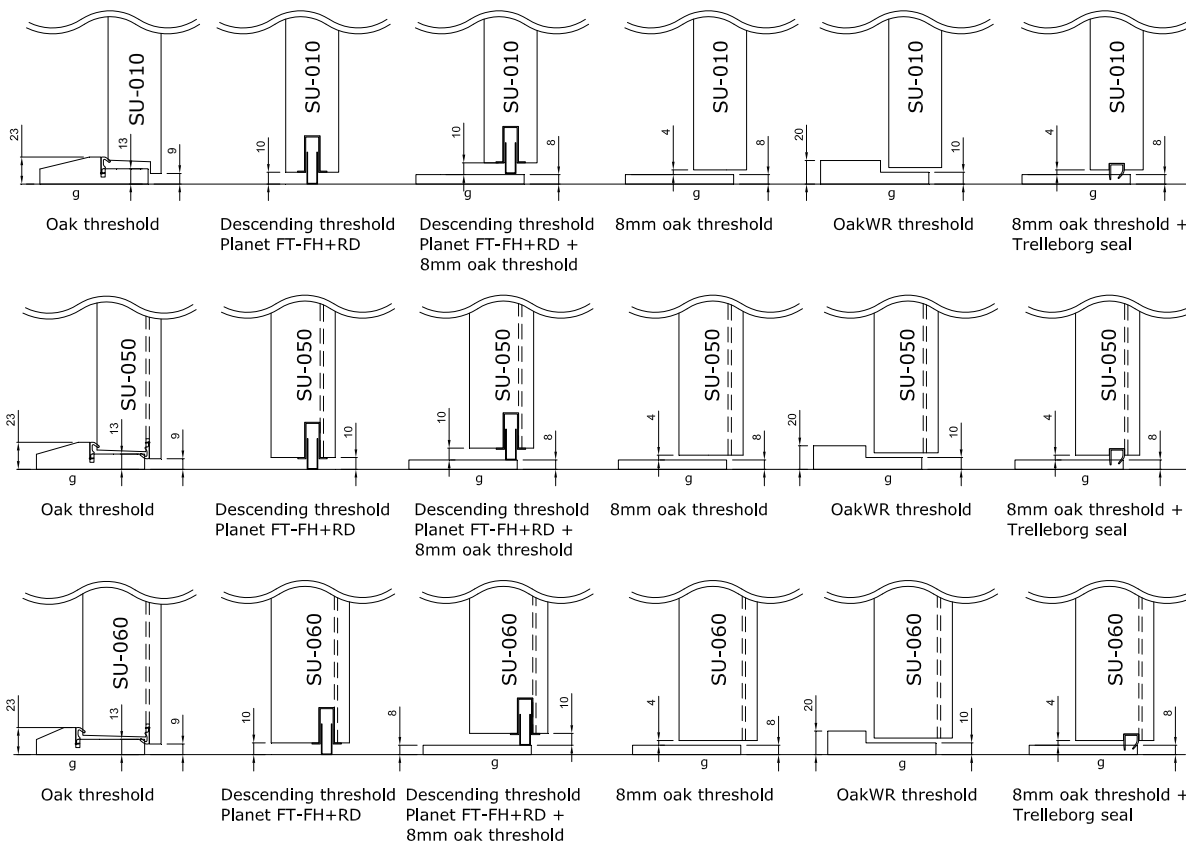
CONNECTION WITH FLOOR



CONNECTION WITH WALL



THRESHOLD OPTIONS



+372 666 5017



info@structo.ee



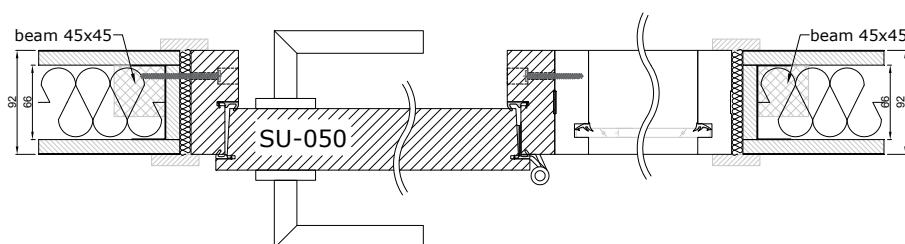
www.structo.ee

DOOR- **M**

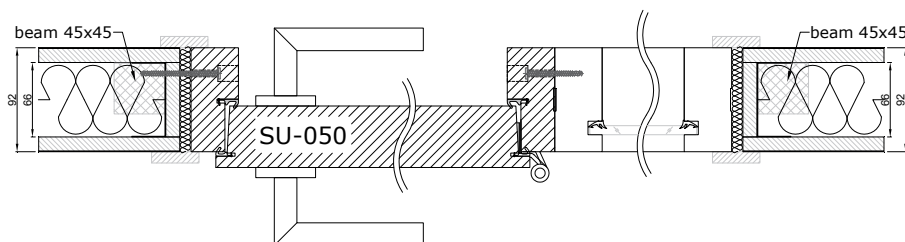
CONNECTION UNITS WITH
COMPATIBLE PRODUCTS



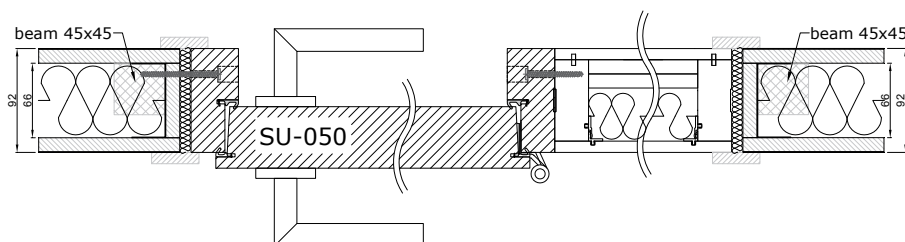
CONNECTION WITH MODULE-30



CONNECTION WITH MODULE-42



CONNECTION WITH ELZONE



+372 666 5017

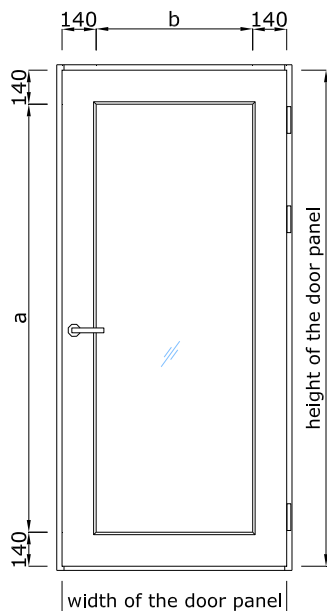


info@structo.ee



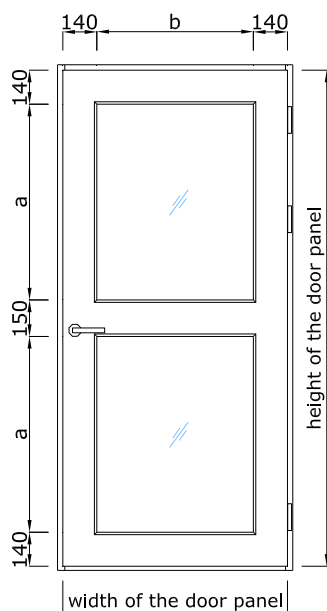
www.structo.ee

G01



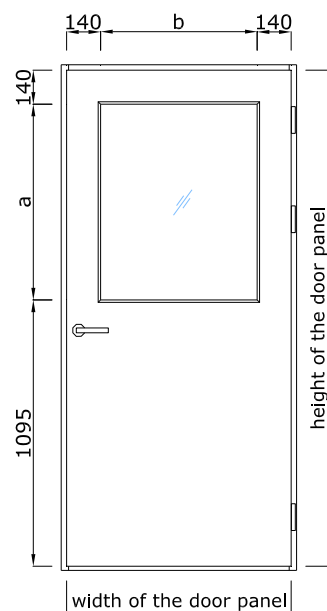
a = height of the door panel - 280mm
b = width of the door panel - 280mm

G03



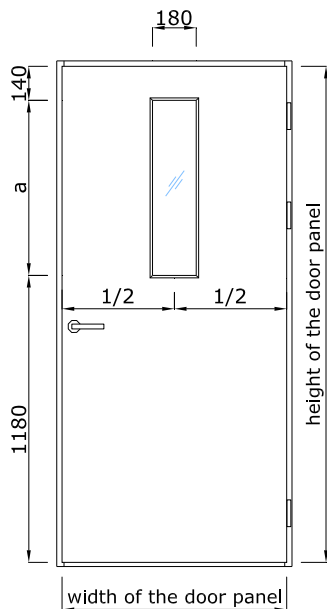
a = (height of the door panel - 430mm) / 2
b = width of the door panel - 280mm

G21



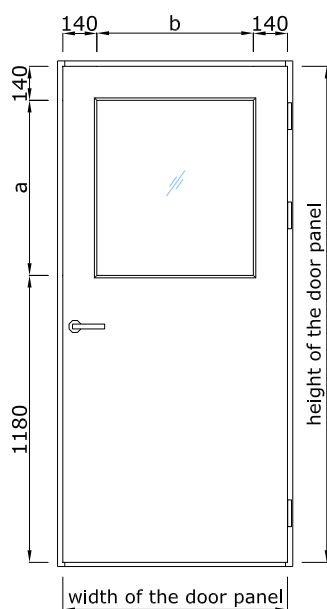
a = height of the door panel - 1235mm
b = width of the door panel - 280mm

G23



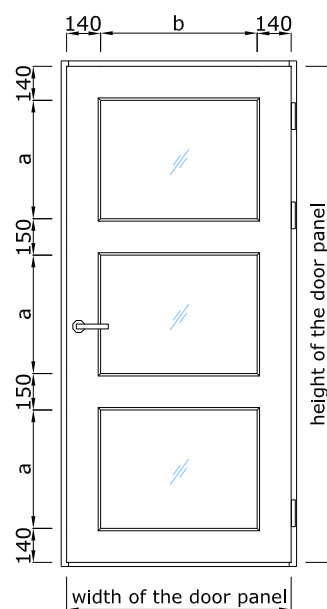
a = height of the door panel - 1320mm

G24



a = height of the door panel - 1320mm
b = width of the door panel - 280mm

G30



a = (height of the door panel - 580mm) / 3
b = width of the door panel - 280mm



+372 666 5017



info@structo.ee



www.structo.ee