

structo

WALL
SYSTEMS



FITS PERFECTLY WITH
WALL PANELS

DOOR— STX

Maximum total height:	3100 mm
Maximum dimensions of the door frame (width x height):	1090 x 2390 mm
Standard door frame depths:	95 mm 123 mm



+372 666 5017



info@structo.ee



www.structo.ee

DOOR-STX | TECHNICAL DESCRIPTION



DOOR-STX is a wooden door where door panel is in the same plane as door moldings when viewed from the outside. Fits perfectly with wall panels.

The door can be ordered opening both in and outwards, and in both cases, the door panel is in the same plane as door moldings when viewed from the outside.

Standard single-panel door frame widths are: M7 (690mm), M8 (790mm), M9 (890mm), M10 (990mm).

The standard door frame height is M21 (2090mm). It is also possible to order paired doors, doors with glass openings and doors of special size.

The standard door frame depths are 95mm and 123mm.

The standard door types are:

- SU-010X only outwards opening door (thickness of the door panel is 45mm).
- SU-050X inwards or outwards opening door (thickness of the door panel is 54,5mm).
- SU-060X inwards or outwards opening door (thickness of the door panel is 66,5mm).

Outside MDF 10mm door moldings are glued to the frame with splines.

Standard dimensions for outside moldings are:

- 10x70mm (vertical) and 10x85mm (horizontal) in case of inwards opening door.
- 10x60mm (both vertical and horizontal) in case of outwards opening door.

It's possible to order outer moldings up to 1200mm wide. Inner moldings are not included and have to be ordered separately.

Maximum total height:	3100 mm
Maximum dimensions of the door frame (width x height):	1090 x 2390 mm
Minimum solid door panel width:	250 mm
Minimum door panel width with a glass opening:	560 mm

We are using following veneers:

- quarter sliced veneer (radial cut) or
- flat cut or plain sliced veneer (tangential cut).

Those veneer strips are then joined together to make spliced veneer faces (wide veneer sheets). Our standard method is book match. It's possible to choose from over 40 different veneer species from Europe, Africa and America.

Thresholds are made of oak. It is also possible to order an automatically descending seal.

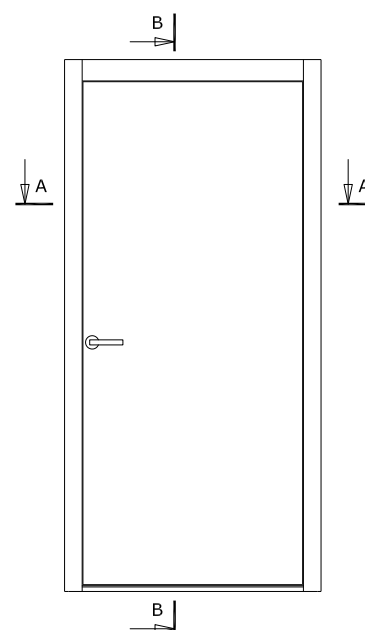
Possible coatings for door panels and panels are:

- painted according to RAL, NCS or Tikkurila colour catalogues.
- covered with natural or technical veneer, which may be stained and varnished, varnished with tinted varnish or painted.

The standard lock case is ASSA 565-50 and the counterpart ASSA 2864. It is also possible to order other lock cases and counterparts.

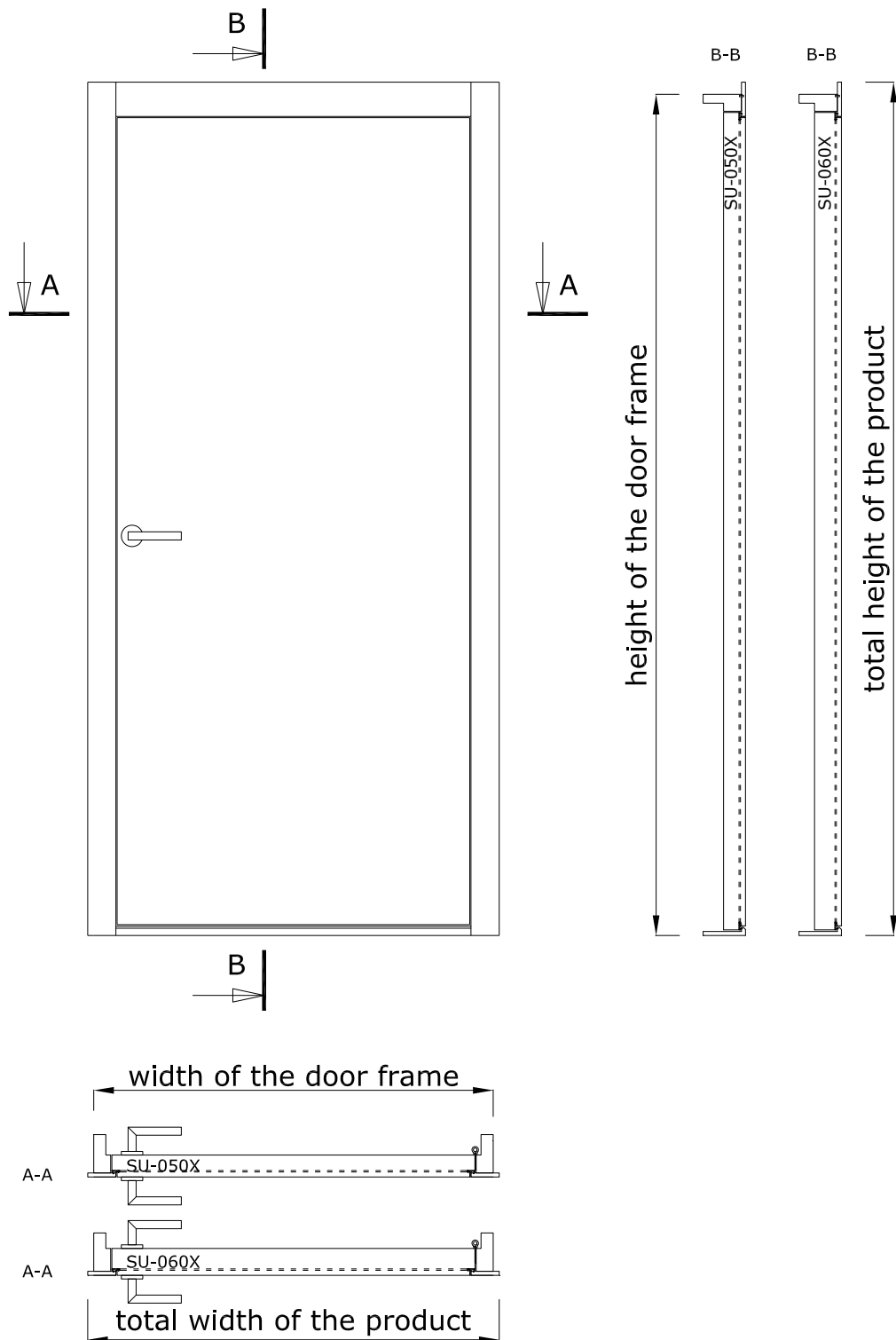
The standard solution uses Abloy 3248 hinges. Other hinges can also be used (incl. hidden hinges).

Structures adjacent to the product must be strong enough to allow profiles to be attached to them.



DOOR- STX

WITH INWARDS OPENING DOOR



+372 666 5017

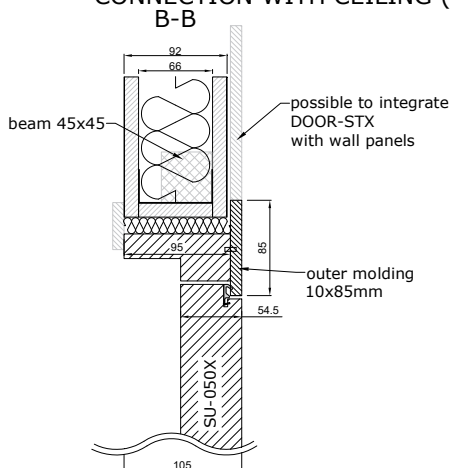


info@structo.ee



www.structo.ee

CONNECTION WITH CEILING (95MM DOOR FRAME)

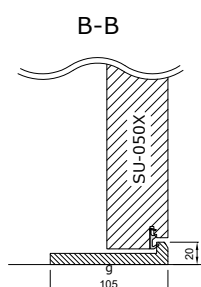


g - glued connection

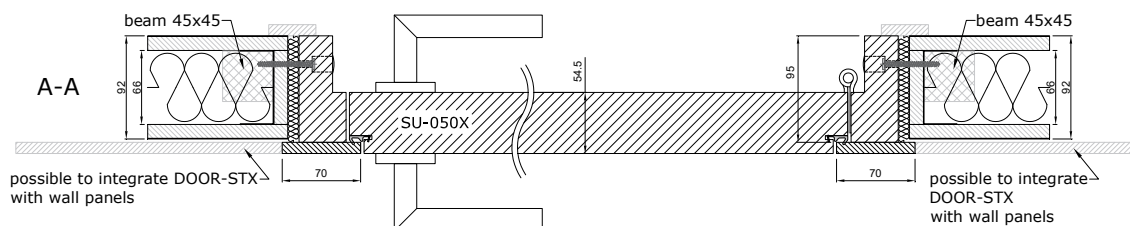
QL3096, RAL9005 black, RAL9003 white, RAL7001 silver gray, RAL8017 bronze

QL3094, RAL9005 black, RAL9003 white, RAL7001 silver gray, RAL8017 bronze

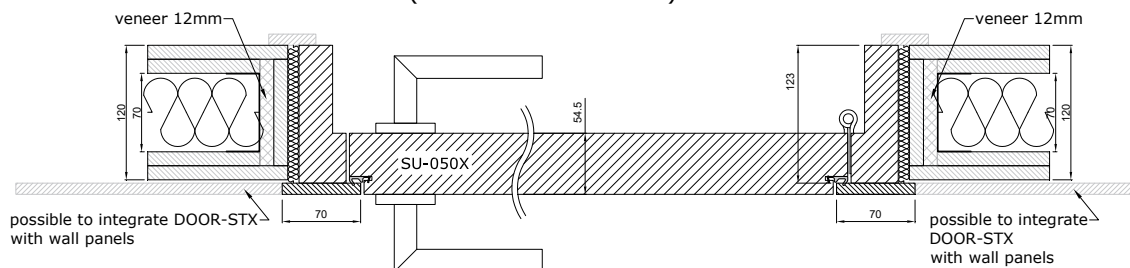
CONNECTION WITH FLOOR (95MM DOOR FRAME)



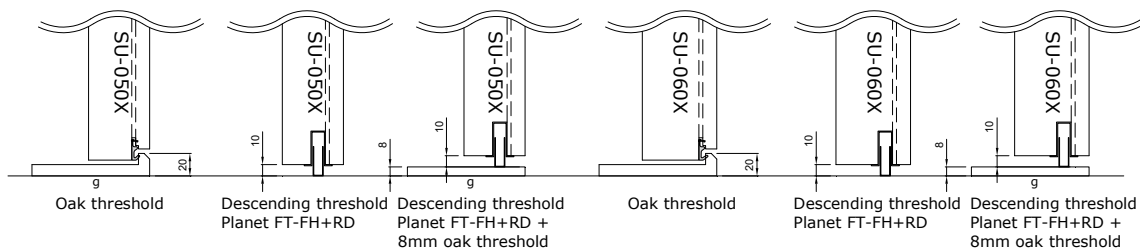
CONNECTION WITH WALL (95MM DOOR FRAME)



CONNECTION WITH WALL (123MM DOOR FRAME)



INWARDS OPENING DOOR THRESHOLDS



+372 666 5017



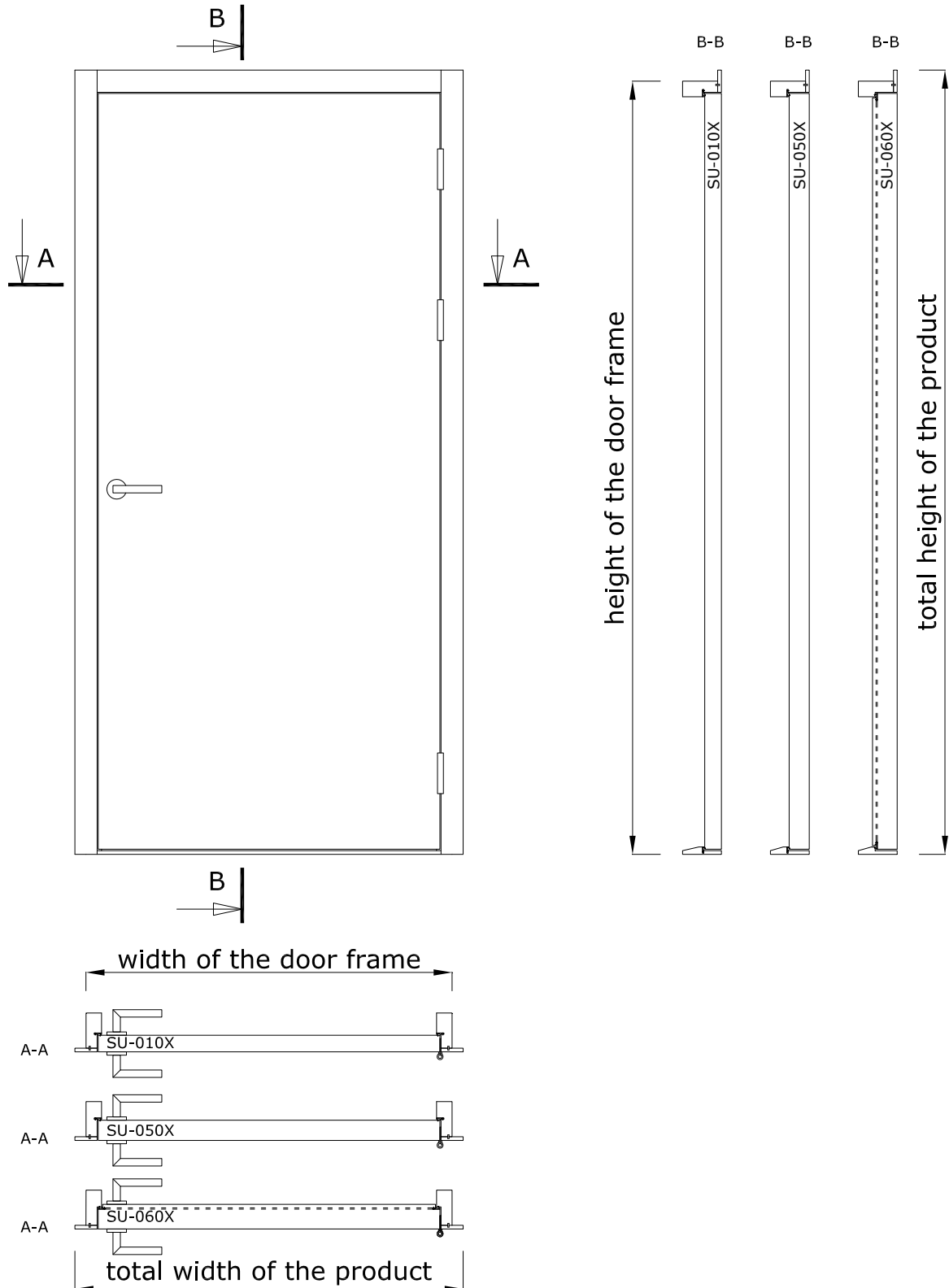
info@structo.ee



www.structo.ee

DOOR- STX

WITH OUTWARDS OPENING DOOR



+372 666 5017

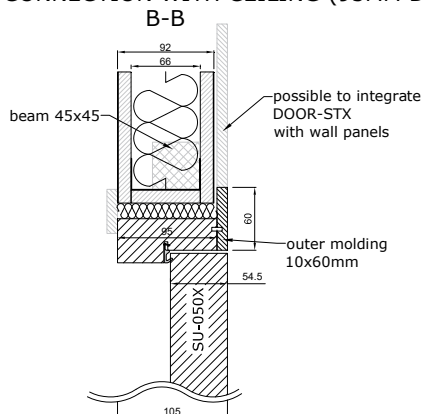


info@structo.ee



www.structo.ee

CONNECTION WITH CEILING (95MM DOOR FRAME)



g - glued connection

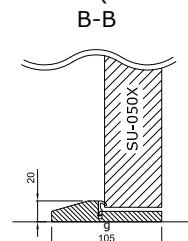
— QL3096, RAL9005 black, RAL9003 white,

RAL7001 silver gray, RAL8017 bronze

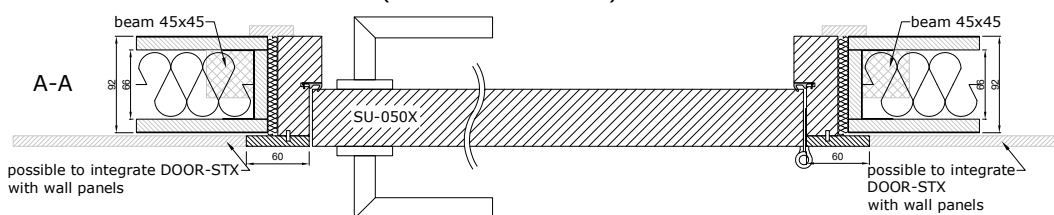
— QL3094, RAL9005 black, RAL9003 white,

RAL7001 silver gray, RAL8017 bronze

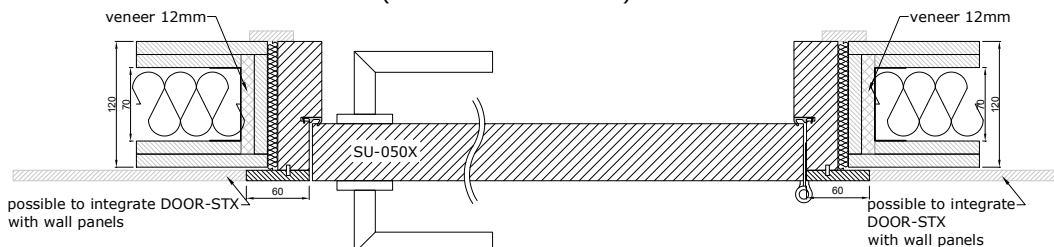
CONNECTION WITH FLOOR (95MM DOOR FRAME)



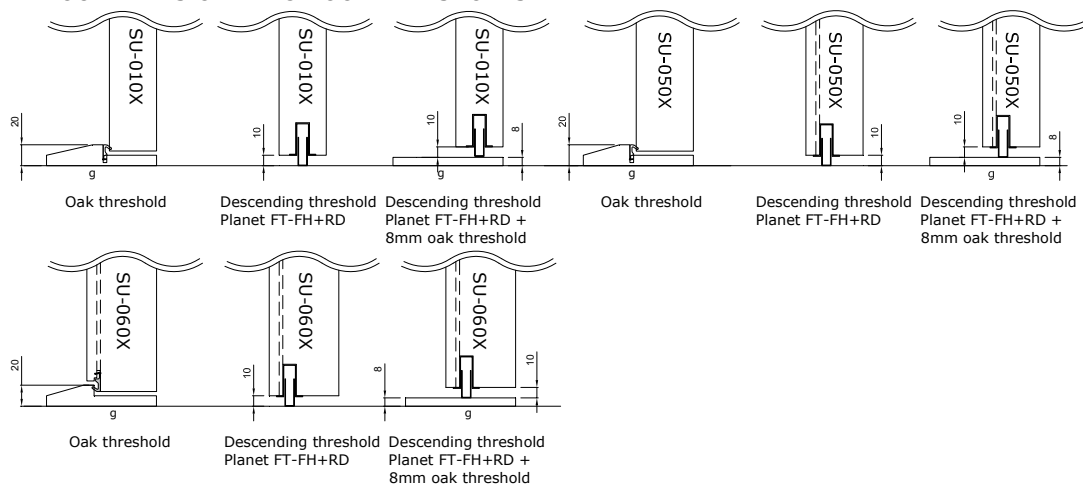
CONNECTION WITH WALL (95MM DOOR FRAME)



CONNECTION WITH WALL (123MM DOOR FRAME)



OUTWARDS OPENING DOOR THRESHOLDS



+372 666 5017

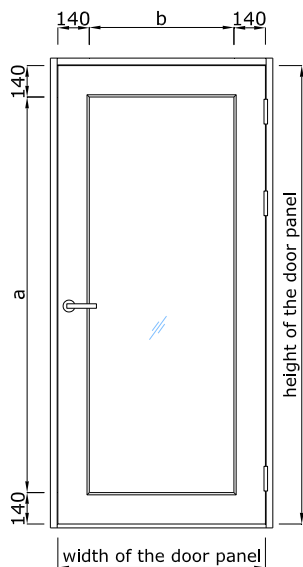


info@structo.ee



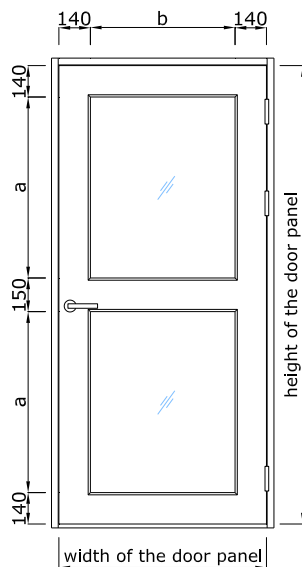
www.structo.ee

G01



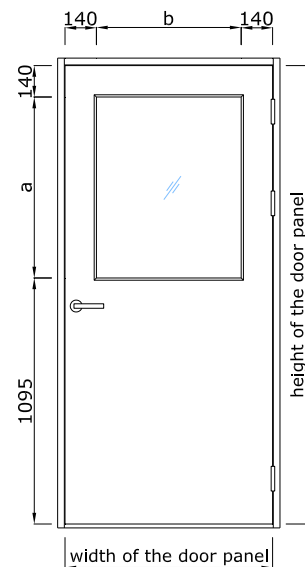
a = height of the door panel - 280mm
b = width of the door panel - 280mm

G03



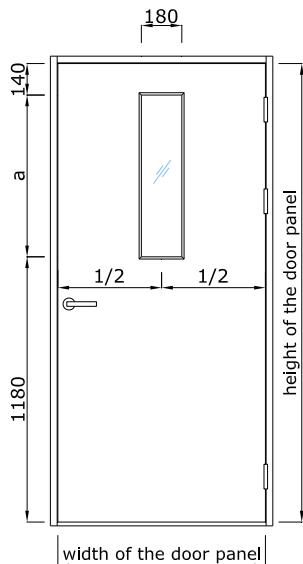
a = (height of the door panel - 430mm) / 2
b = width of the door panel - 280mm

G21



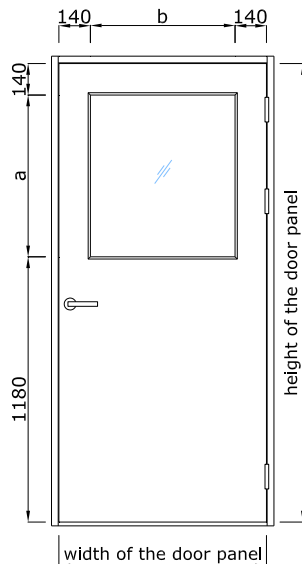
a = height of the door panel - 1235mm
b = width of the door panel - 280mm

G23



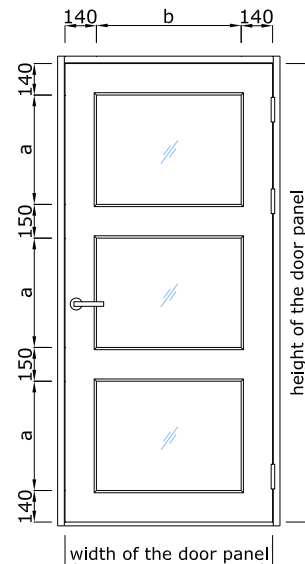
a = height of the door panel - 1320mm

G24



a = height of the door panel - 1320mm
b = width of the door panel - 280mm

G30



a = (height of the door panel - 580mm) / 3
b = width of the door panel - 280mm



+372 666 5017



info@structo.ee



www.structo.ee