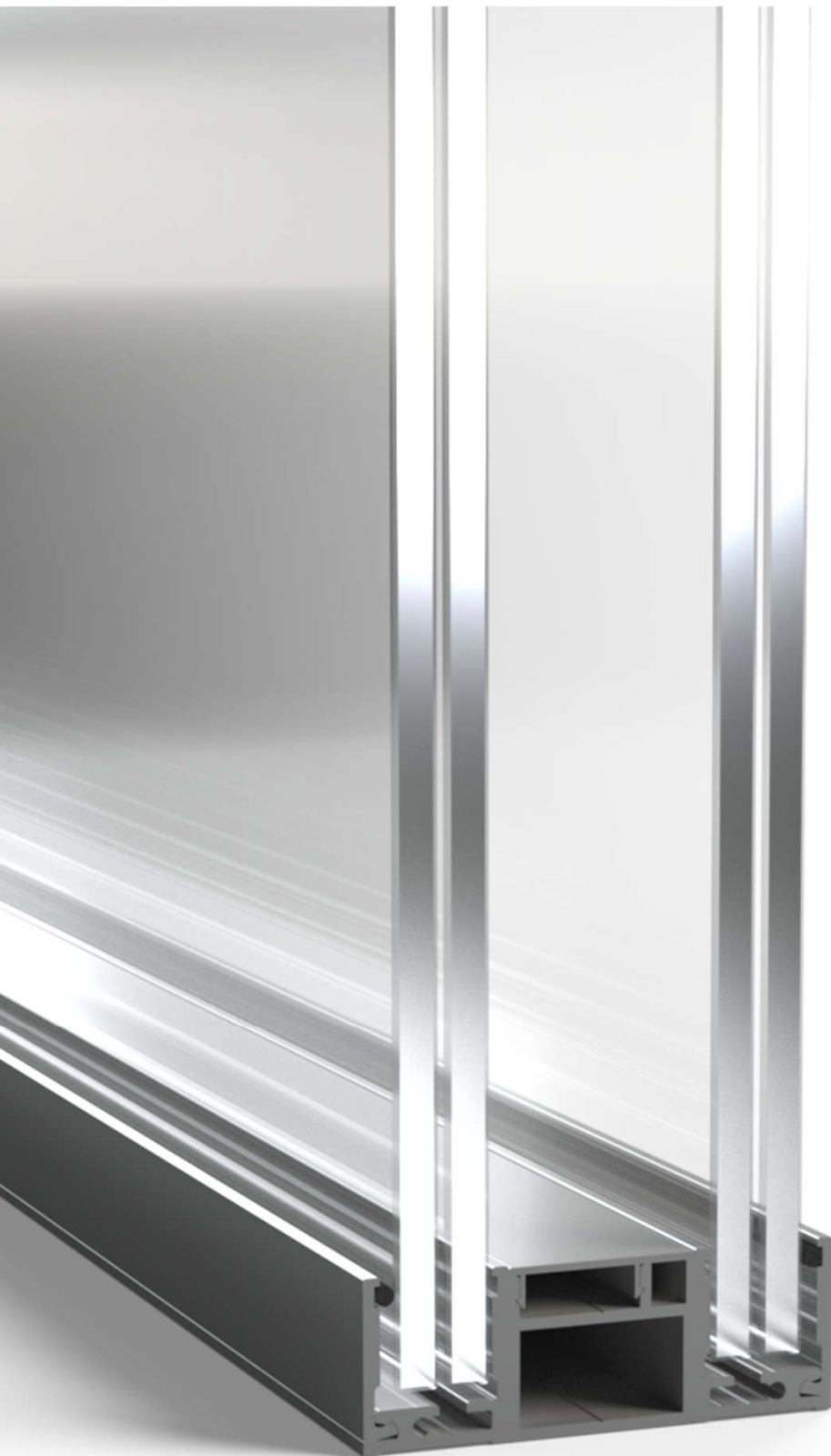


# structo

WALL  
SYSTEMS



MINIMALIST SOLUTION

DOUBLE GLAZING  
FOR BETTER  
SOUNDPROOFING

## DOUBLELINE – 32

Maximum wall height:	4000 mm
Soundproofing: * with 66.2 + 88.2 more soundproof laminated glasses	Rw = 49 dB*
Dimensions of the profile system (width x height):	86 x 30 mm
Suitable glasses for both layers with a thickness:	12 - 17,14 mm



+372 666 5017



info@structo.ee



www.structo.ee

DOUBLELINE-32 is a double glazed wall system made with aluminum profiles for glasses between 12 - 17,14mm.

The total width of the perimeter profiles is 86mm and the height is 30mm.

The standard surface finish of aluminum profiles is natural (silver) anodizing but it is also possible to order a painted surface according to the RAL colour catalogue.

Possible types of glass are tempered, laminated or tempered-laminated.

The surface of the glass can be bright, very bright, mass-tinted, background-painted or matte.

A 5mm black circular cross-section EPDM top seal is used as the glass seal.

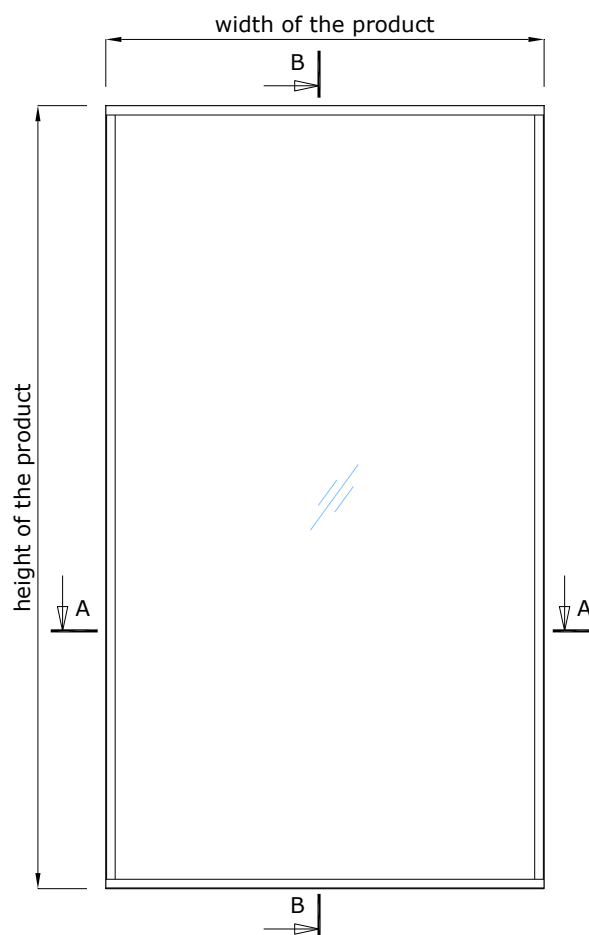
Side by side glasses are connected to each other with double sided colourless tape.

The structures adjacent to the product must be strong enough to allow profiles to be attached to them.

Soundproofing measured in laboratory (Rw):

**Rw = 49 dB**

(with 66.2 + 88.2 more soundproof laminated glasses)



Maximum wall height:

**4000 mm**

Suitable glasses for both layers with a thickness:

**12 – 17,14 mm**



+372 666 5017

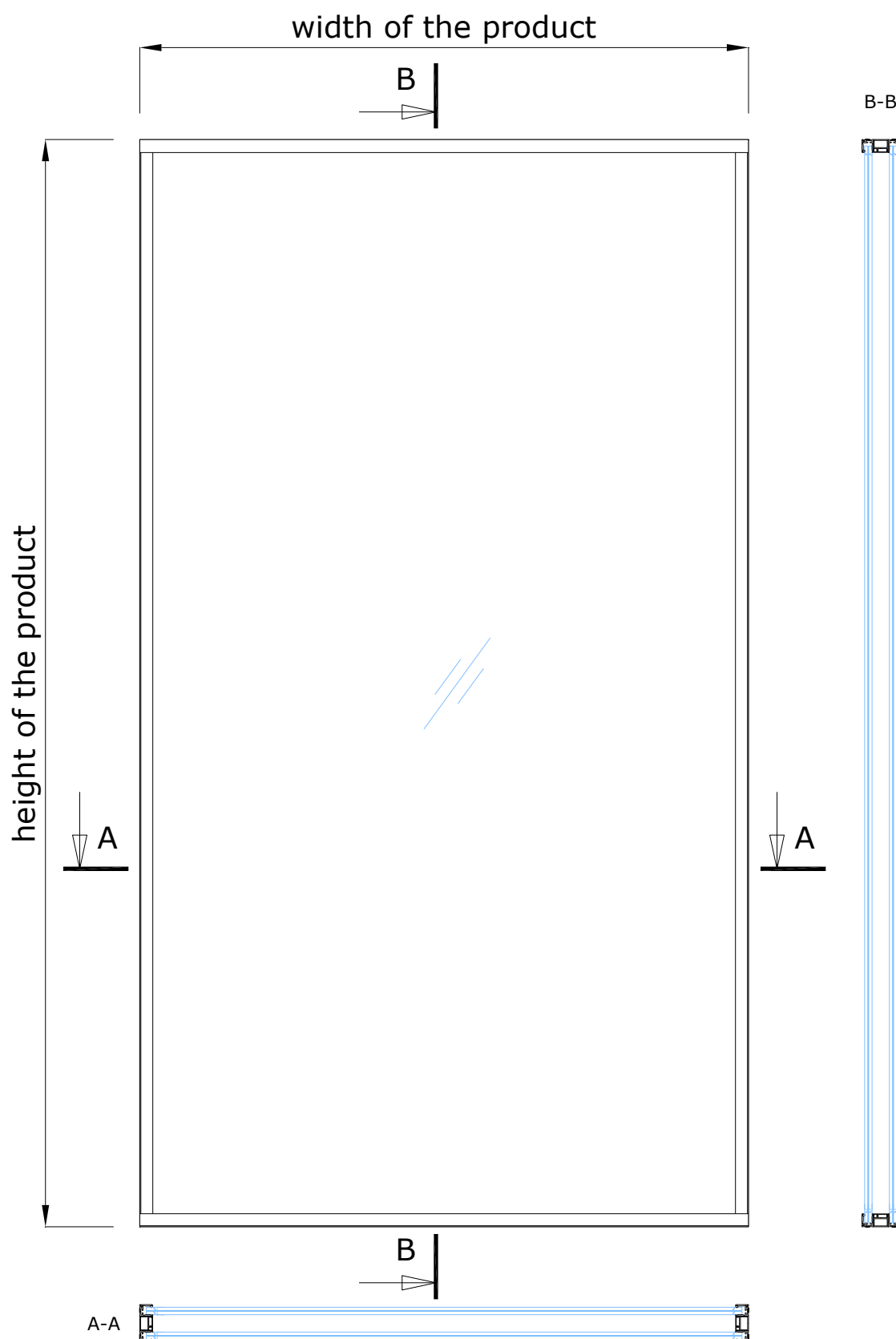


info@structo.ee



www.structo.ee

# DOUBLELINE-32 | STANDARD SOLUTION



+372 666 5017

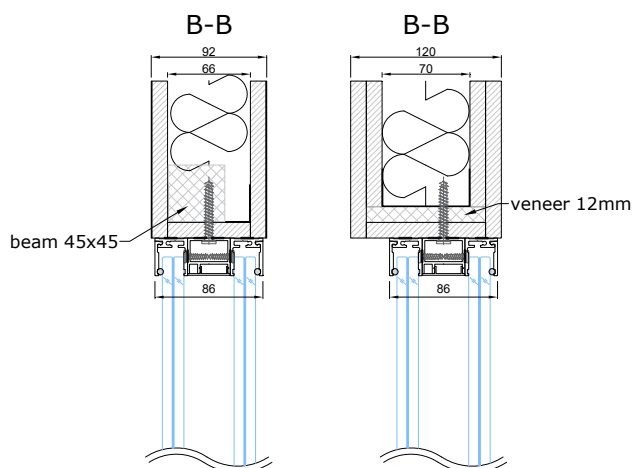


info@structo.ee

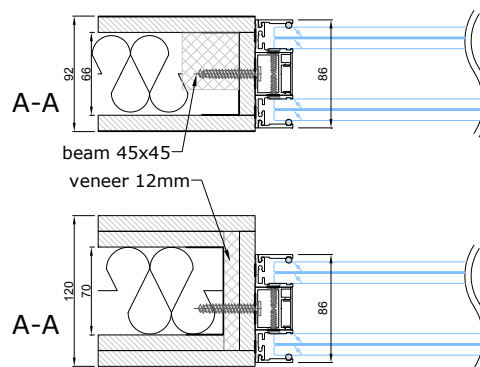


www.structo.ee

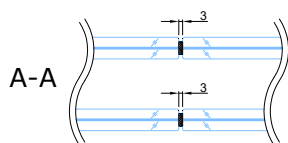
## CONNECTION WITH CEILING



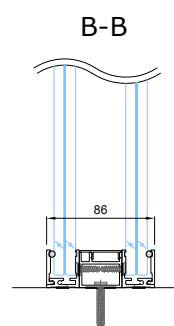
## CONNECTION WITH WALL



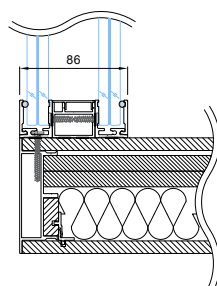
## CONNECTION WITH SIDE GLASS



## CONNECTION WITH FLOOR

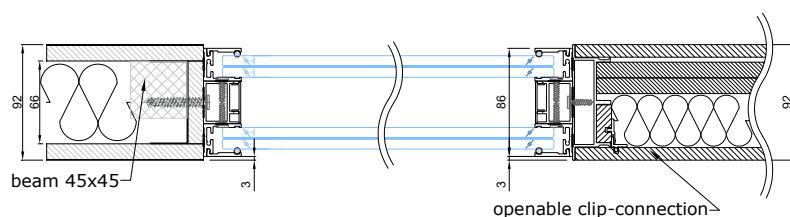


## 90° CONNECTION UNIT WITH PORTAL PORTA-92A OR ELZONE-92A



- - seal, EPDM-50Dha\_5mm\_BLACK
- - seal, FIX-SEAL/S 3x10mm, black
- - AFTC double-sided tape, 2,5x5mm / 3x7mm / 3x10mm, colourless

## CONNECTION WITH PORTA-92A OR ELZONE-92A



+372 666 5017



info@structo.ee



www.structo.ee