

structo

WALL
SYSTEMS



FITS WITH DOORS AND FULL
GLASS WALLS

ELZONE

Maximum wall height if panels are in the height direction in one piece: * coloured	2790 mm*
Maximum wall height if panels are in the height direction in two pieces:	3500 mm
Standard wall thicknesses:	92 mm 120 mm



+372 666 5017



info@structo.ee



www.structo.ee

ELZONE is a wall with MDF carcass covered with MDF panels.

Standard wall thicknesses are 92mm and 120mm.

MDF 10mm panels of one side are glued to the carcass with splines. For attaching the other side (usually, the outer side) both splines or openable clip-system can be chosen.

Moldings are required to cover up installation grooves.

The minimum width of the wall when installing electrical accessories is 135 mm.

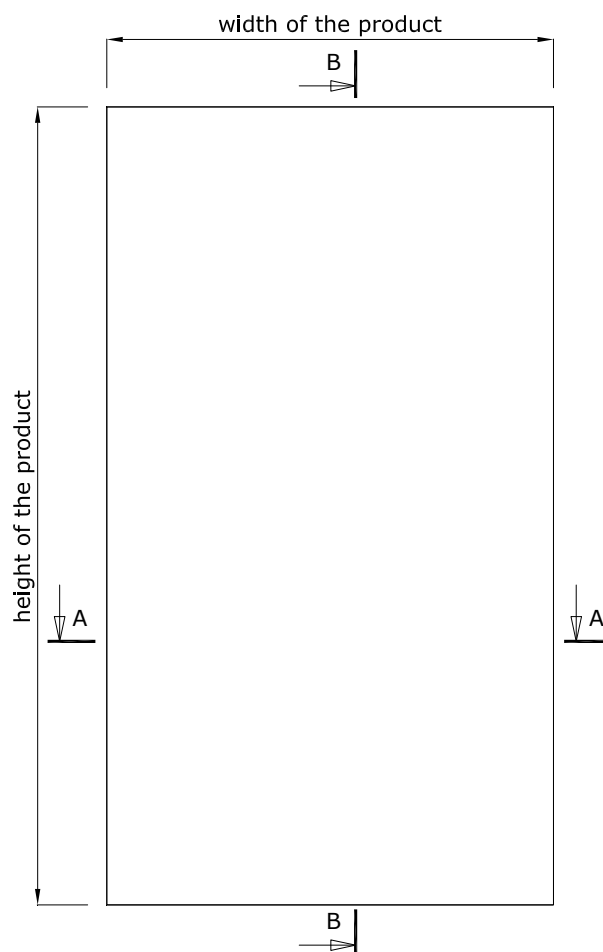
To increase the soundproofing, mineral wool and up to 2 layers of plasterboard are installed between the carcass.

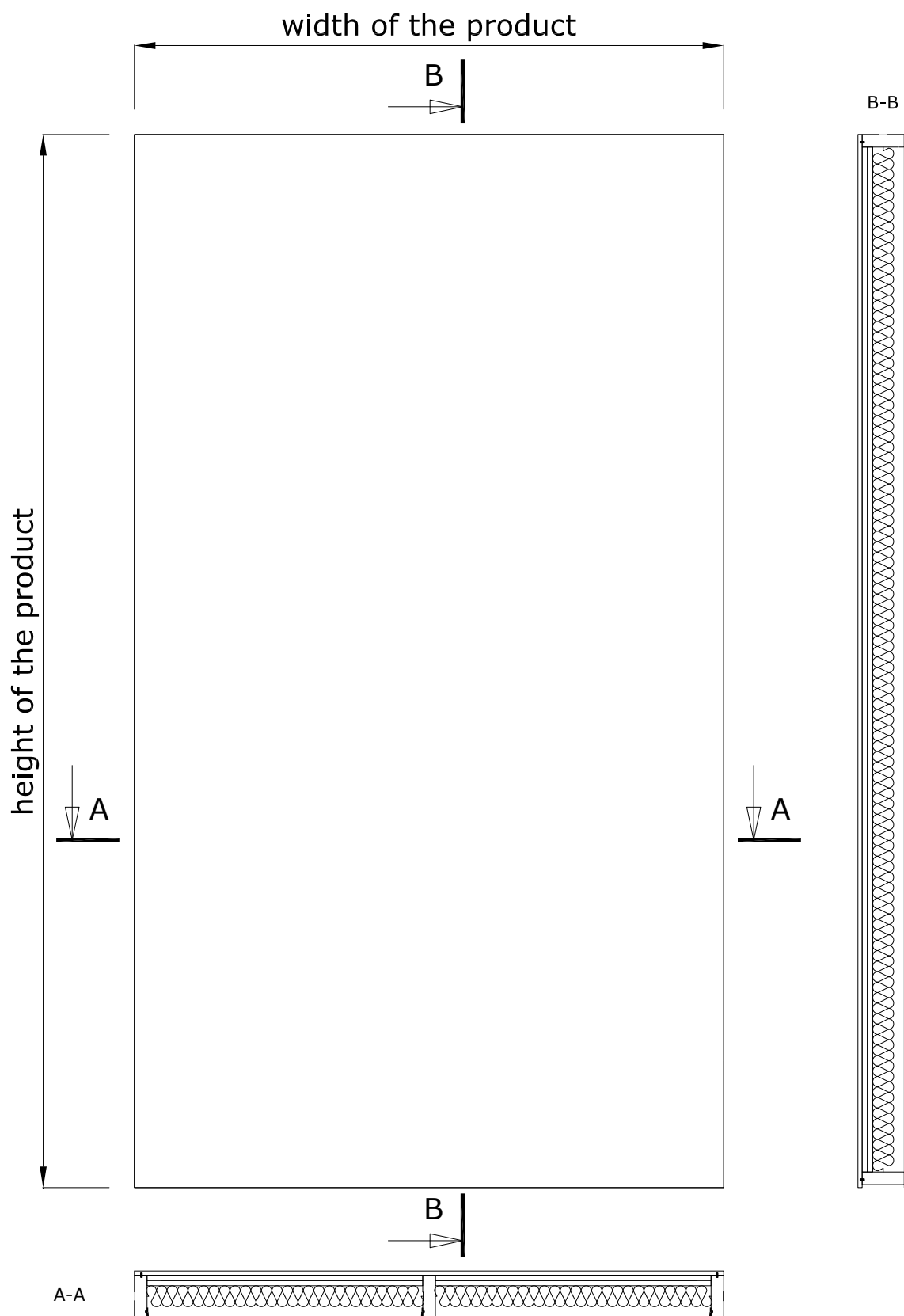
Possible coatings for panels and visible profiles are:

- painted according to RAL, NCS or Tikkurila colour catalogues.
- covered with natural or technical veneer, which may be stained and varnished, varnished with tinted varnish or painted.

The structures adjacent to the product must be strong enough to allow profiles to be attached to them.

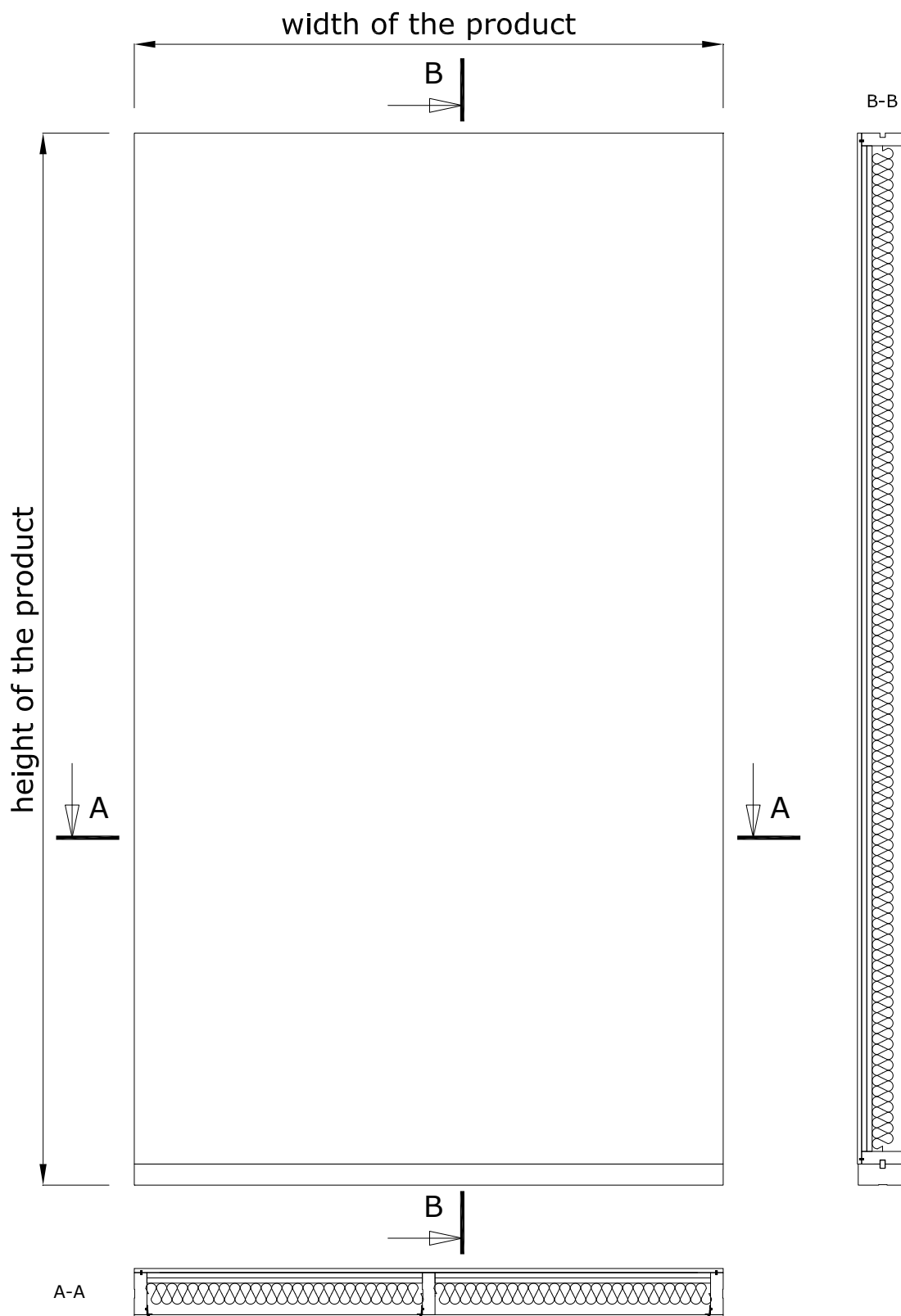
Maximum wall height if panels are in the height direction in one piece:	2790 mm*
* coloured	
Maximum wall height if panels are in the height direction in two pieces:	3500 mm
Standard wall thicknesses:	92 mm 120 mm





ELZONE

WOODFRAME-R



+372 666 5017

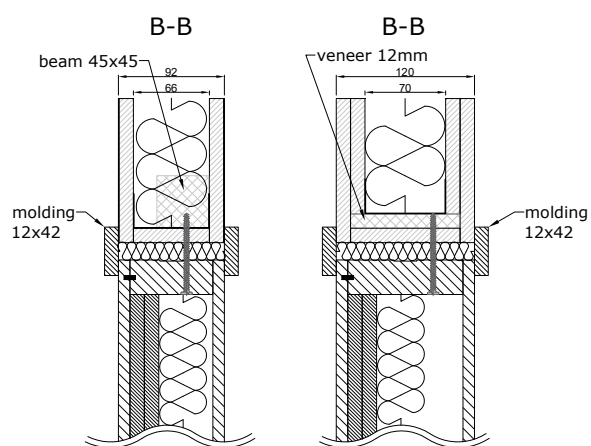


info@structo.ee

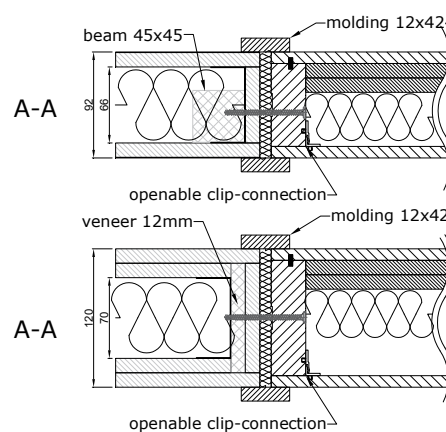


www.structo.ee

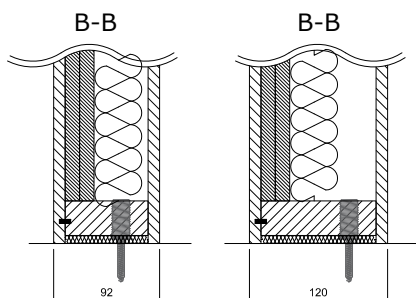
CONNECTION WITH CEILING



CONNECTION WITH WALL



CONNECTION WITH FLOOR



■ - connection with spline and glue



+372 666 5017

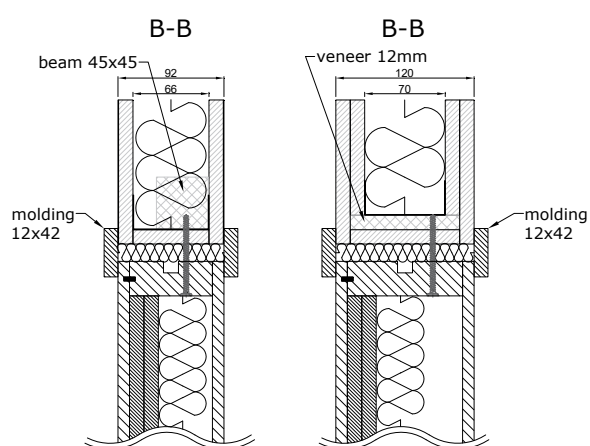


info@structo.ee

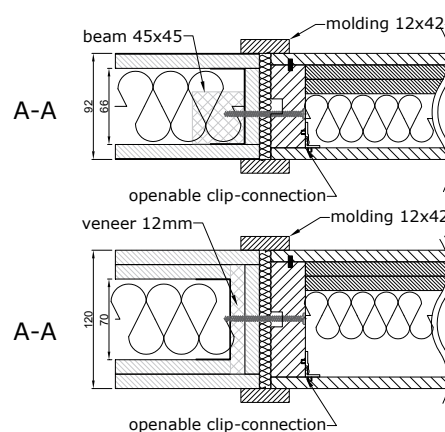


www.structo.ee

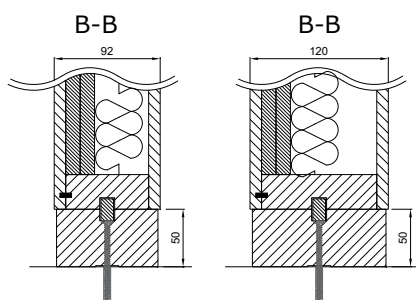
CONNECTION WITH CEILING



CONNECTION WITH WALL



CONNECTION WITH FLOOR



■ - connection with spline and glue



+372 666 5017



info@structo.ee



www.structo.ee

