

structo

WALL
SYSTEMS



FITS PERFECTLY WITH
GLASS WALLS

FLOOR TRACK

FLOORSLIDE – S32

Maximum door height: 2800 mm*

* if width is max 1400mm

Maximum door width: 1500 mm*

* if height is max 2650mm

Suitable glasses with a
thickness: 6 – 8,76 mm



+372 666 5017



info@structo.ee



www.structo.ee

FLOORSLIDE - S32 | TECHNICAL DESCRIPTION



FLOORSLIDE-S32 is an aluminum framed sliding door (single or pair) for glasses between 6 - 8,76mm.

The standard surface finish of aluminum profiles is natural (silver) anodizing, but it is also possible to order a painted surface according to the RAL colour catalogue.

Possible types of glass are tempered, laminated or tempered-laminated.

The surface of the glass can be bright, very bright, mass-tinted, background-painted or matte.

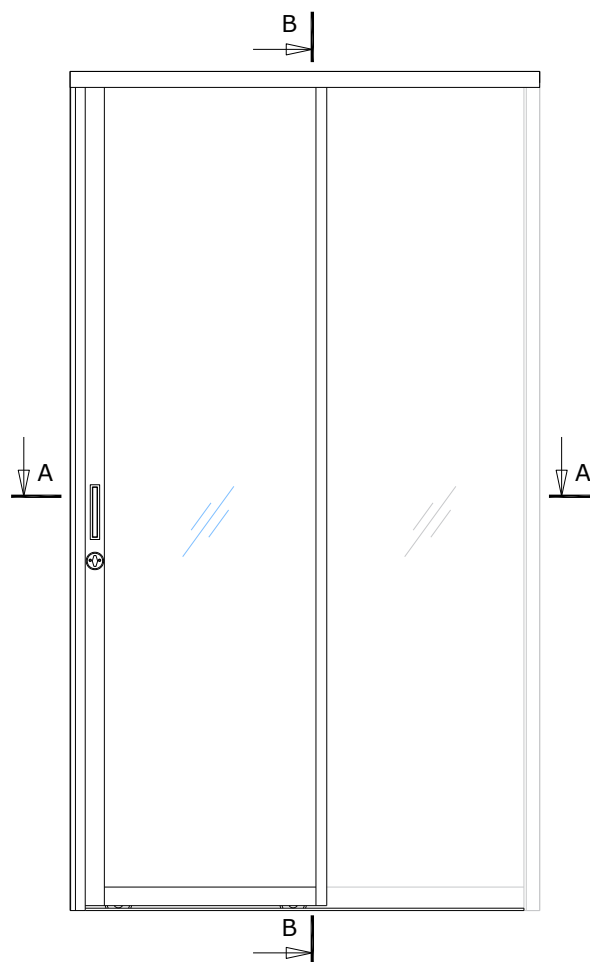
It's possible to use thin 15x30mm aluminum H-profiles to divide one glass panel into several panels. That enables to use different materials in the door panels, which can give the door panel an exciting and contrasting look.

Standard lock cases are ASSA 13787-28, Abloy 306-30 or Valnes E9790-30, but it is possible to use different lock cases. Other hardware (cylinder and/or twist knob must be compatible with chosen lock case).

Standard handle is built-in handle ETNA 28x163, but it is also possible to use other handles.

The structures adjacent to the product must be strong enough to allow profiles to be attached to them.

| | |
|--|-------------|
| Maximum door height: * if width is max 1400mm | 2800 mm* |
| Maximum door width: * if height is max 2650mm | 1500 mm* |
| Suitable glasses with a thickness: | 6 – 8,76 mm |



+372 666 5017

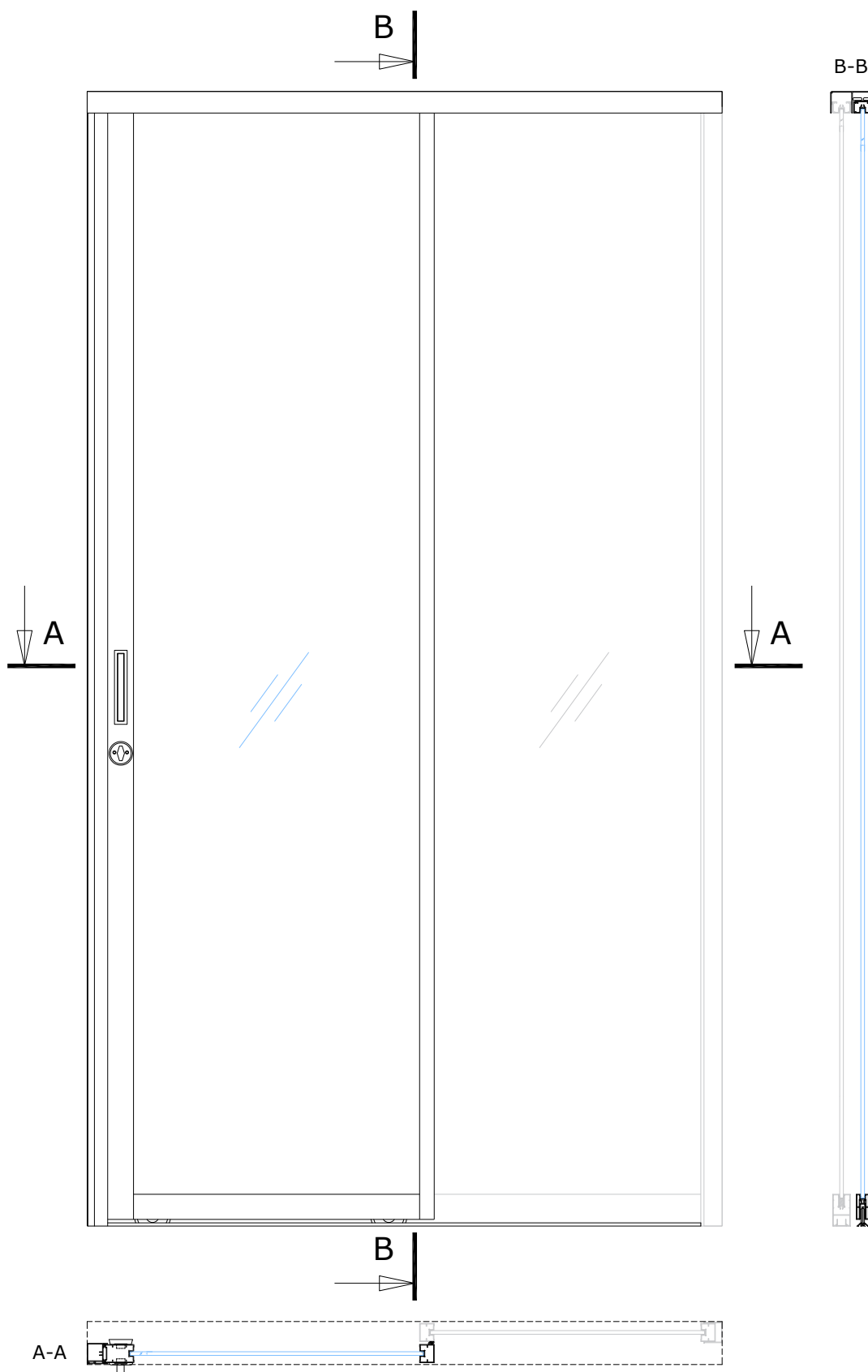


info@structo.ee



www.structo.ee

FLOORSLIDE - S32 | STANDARD SOLUTION



+372 666 5017



info@structo.ee



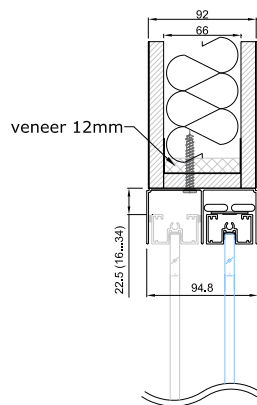
www.structo.ee

FLOORSLIDE - S32

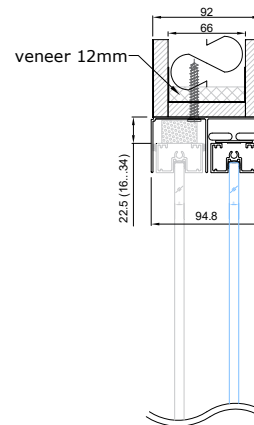
CONNECTION UNITS MOUNTING INTO OPENING



CEILING CONNECTION
WITH FLOORSLIDE
B-B

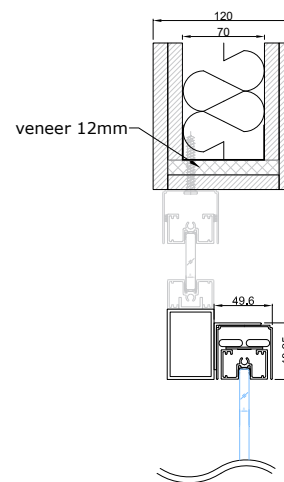


ALTERNATIVE MORE SOUNDPROOF
CONNECTION WITH CEILING

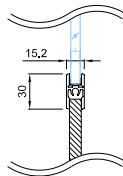


- seal, LU6, transparent
- P-seal 5,5*9mm, black
- draught stop

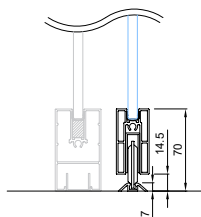
CONNECTION WITH CEILING
WITH OVERLIGHT



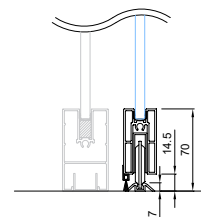
OPTIONAL HORIZONTAL MIDDLE
CONNECTION WITH H-PROFILE FOR
CONNECTING DIFFERENT MATERIALS



CONNECTION WITH FLOOR
B-B



ALTERNATIVE MORE SOUNDPROOF
CONNECTION WITH FLOOR
B-B



+372 666 5017



info@structo.ee



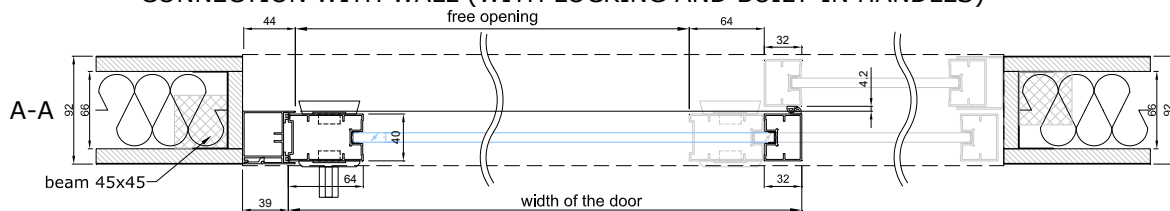
www.structo.ee

FLOORSLIDE - S32

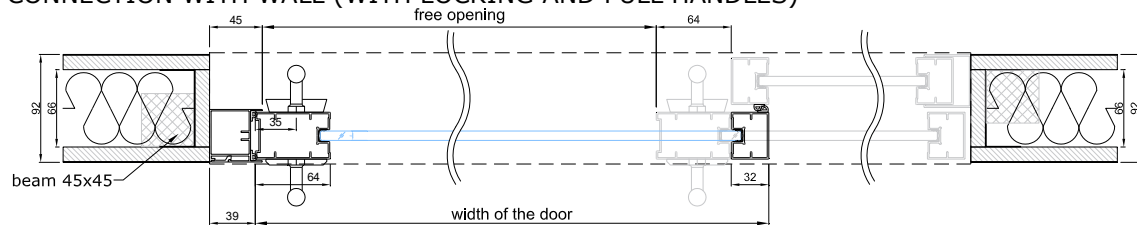
CONNECTION UNITS MOUNTING INTO OPENING



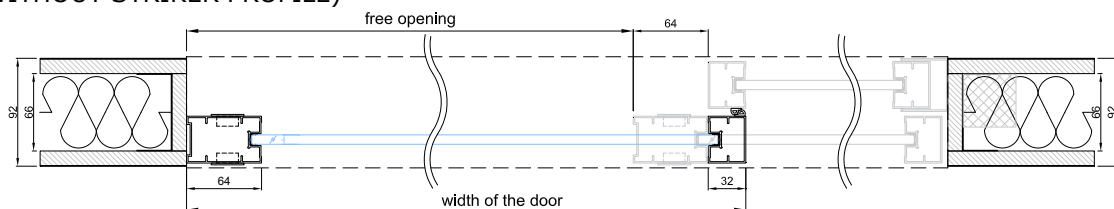
CONNECTION WITH WALL (WITH LOCKING AND BUILT-IN HANDLES)



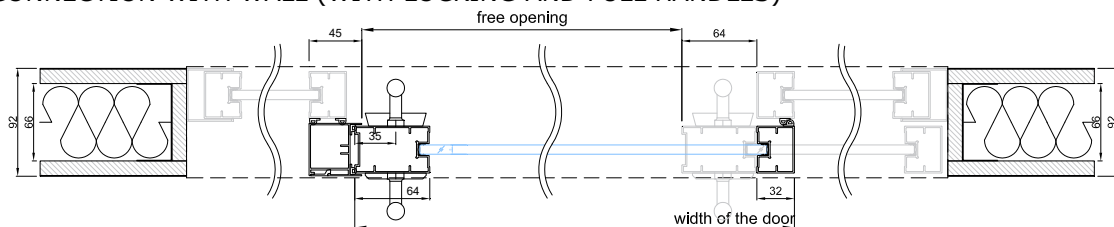
CONNECTION WITH WALL (WITH LOCKING AND PULL HANDLES)



CONNECTION WITH WALL (WITH BUILT-IN HANDLES AND WITHOUT STRIKER PROFILE)



CONNECTION WITH WALL (WITH LOCKING AND PULL HANDLES)



+372 666 5017



info@structo.ee



www.structo.ee

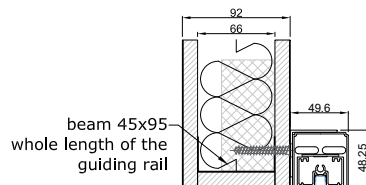
FLOORSLIDE - S32

CONNECTION UNITS MOUNTING ON A WALL

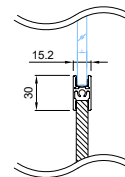


CONNECTION WITH CEILING

B-B

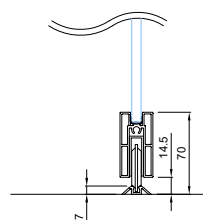


OPTIONAL HORIZONTAL MIDDLE CONNECTION WITH H-PROFILE FOR CONNECTING DIFFERENT MATERIALS



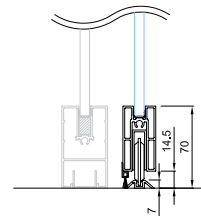
CONNECTION WITH FLOOR

B-B



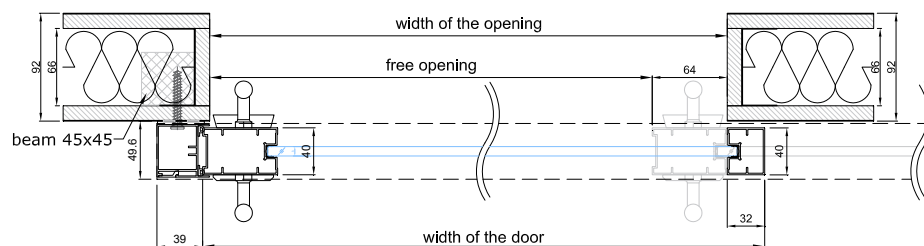
ALTERNATIVE MORE SOUNDPROOF CONNECTION WITH FLOOR

B-B

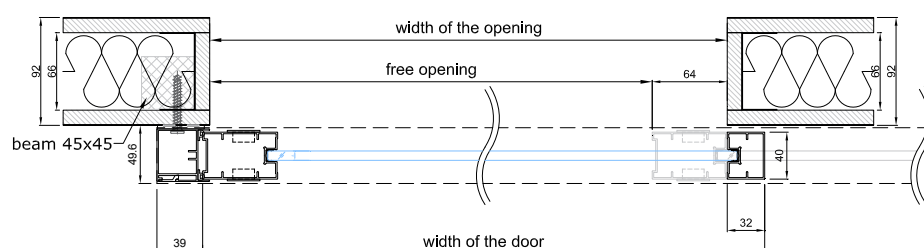


- seal, LU6, transparent
- P-seal 5,5*9mm, black
- draught stop

CONNECTION WITH WALL (WITH LOCKING AND PULL HANDLES)



CONNECTION WITH WALL (WITH BUILT-IN HANDLES)



+372 666 5017



info@structo.ee



www.structo.ee