

# structo

WALL  
SYSTEMS



MINIMALIST SOLUTION  
THAT FITS PERFECTLY  
WITH PORTALS

DECOR PROFILES CAN  
CREATE CONTRASTING  
LOOKS

## GLASSLINE – 30

Maximum wall height:	3500 mm
Soundproofing:	<b>R<sub>w</sub> = 36 dB*</b> <small>* 55.2 laminated with more soundproof glass</small>
Dimensions of the profile (width x height):	20 x 30 mm
Suitable glasses with a thickness:	8 – 11,14 mm



+372 666 5017



info@structo.ee



www.structo.ee

GLASSLINE-30 is a full glass wall system made with aluminum profiles for glasses between 8-11,14mm.

The width of the profile is 20mm and the height is 30mm.

The standard surface finish of aluminum profiles is natural (silver) anodizing but it is also possible to order a painted surface according to the RAL colour catalogue.

Possible types of glass are tempered, laminated or tempered-laminated.

The surface of the glass can be bright, very bright, mass-tinted, background-painted or matte.

Adjacent glass panes are joined together with silicone tape. If desired, the joint can be covered with a 30mmx2mm aluminum Decor profile.

Decor profile can be glued anywhere on the glass surface to create exiting looks.

The standard floor profile height is 30mm, but it is also possible to choose a 70mm profile with the same width.

A 5mm black circular cross-section EPDM top seal is used as the glass seal.

The structures adjacent to the product must be strong enough to allow profiles to be attached to them.

Soundproofing measured in laboratory (Rw):

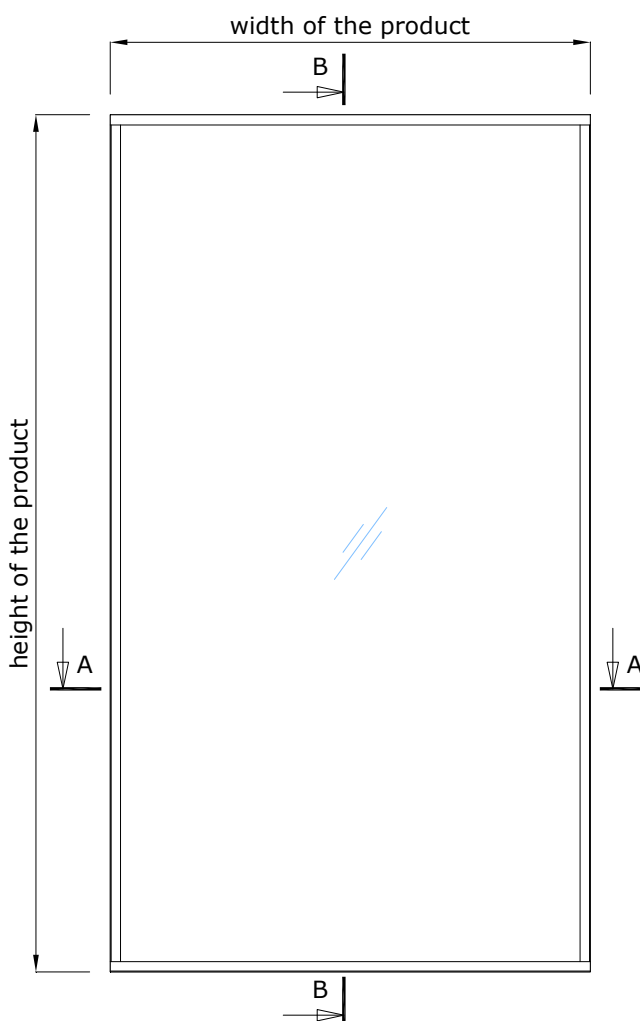
**Rw = 33 dB**

( with 10mm glass)

**Rw = 36 dB**

(with 55.2 laminated with more soundproof glass)

Maximum wall height:	<b>3500 mm</b>
Dimensions of the profile (width x height):	<b>20 x 30 mm</b>
Suitable glasses with a thickness:	<b>8 – 11,14 mm</b>



+372 666 5017

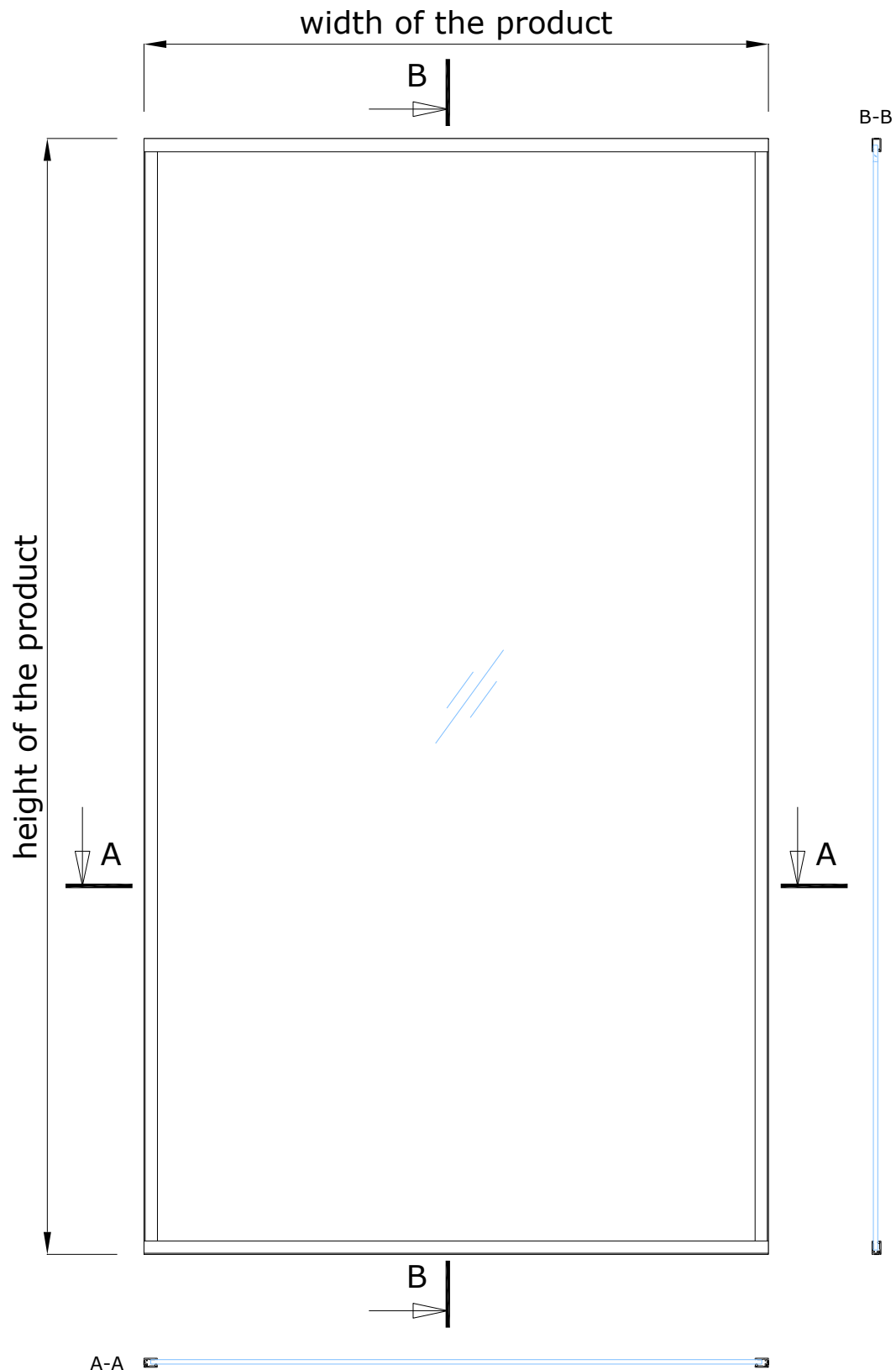


info@structo.ee



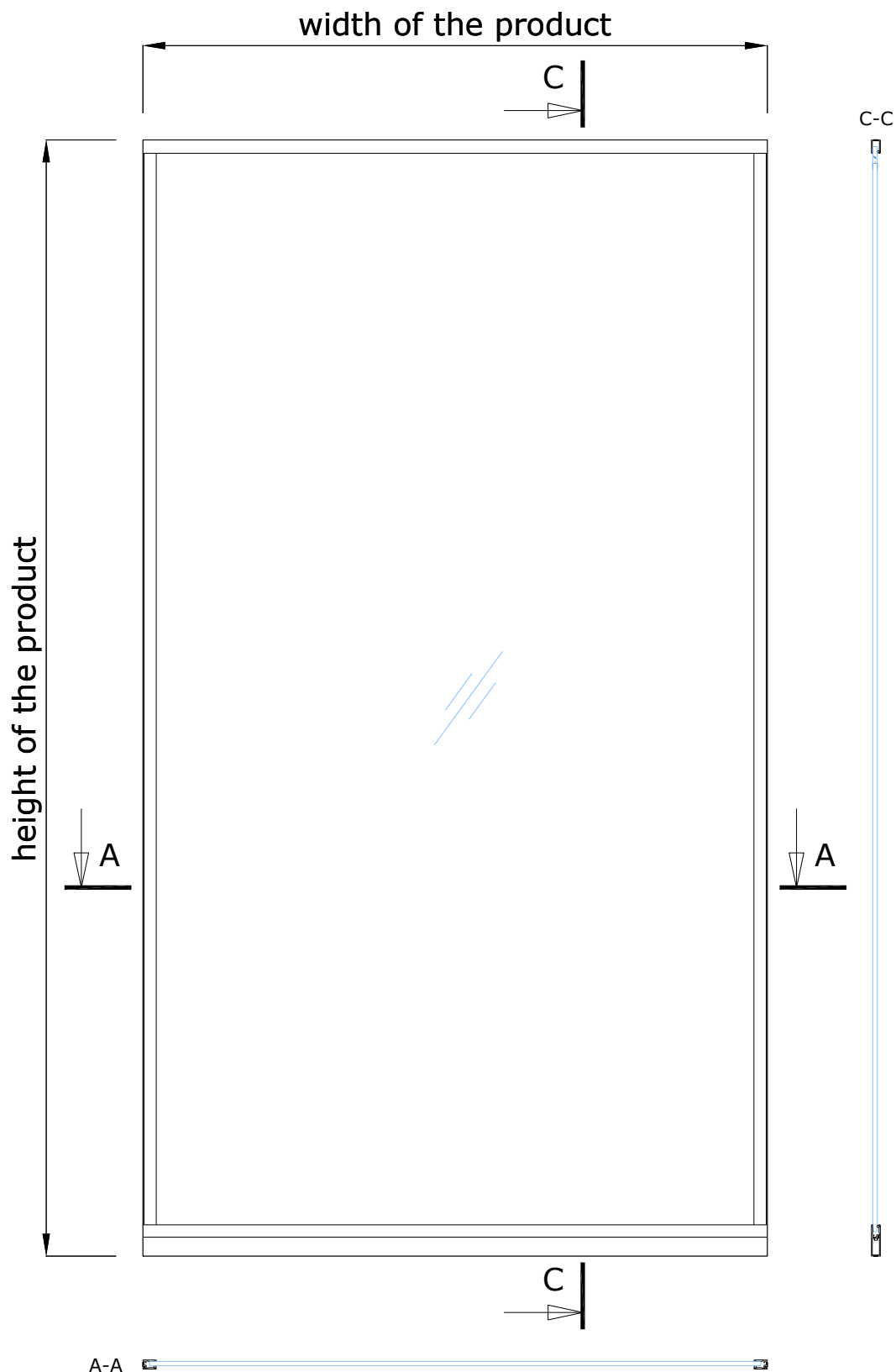
www.structo.ee

# GLASSLINE-30 | STANDARD SOLUTION



# GLASSLINE-30

SOLUTION WITH HIGH  
FLOOR PROFILE



+372 666 5017



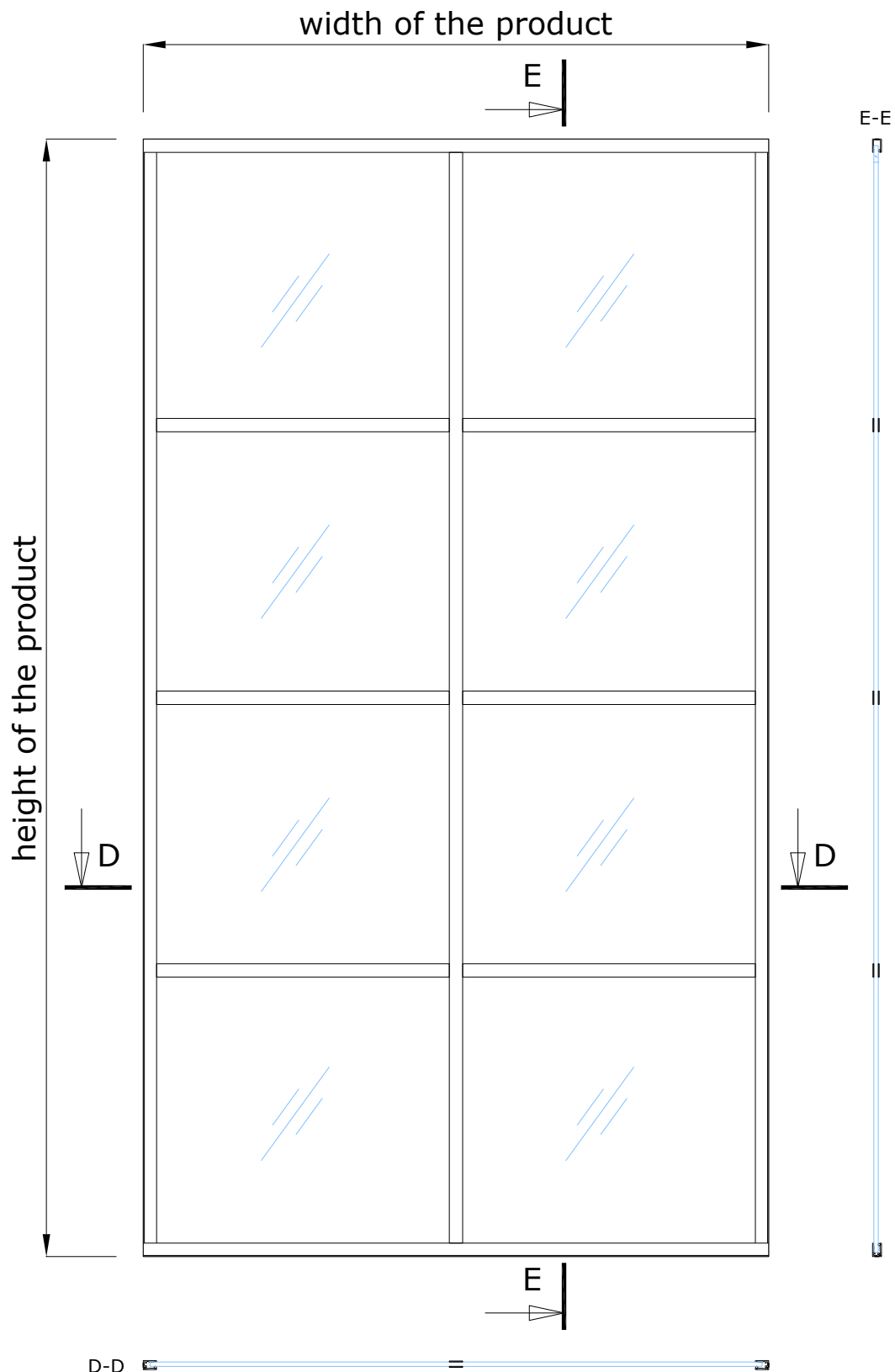
info@structo.ee



www.structo.ee

# GLASSLINE-30

## EXAMPLE SOLUTION WITH DECOR PROFILE



+372 666 5017

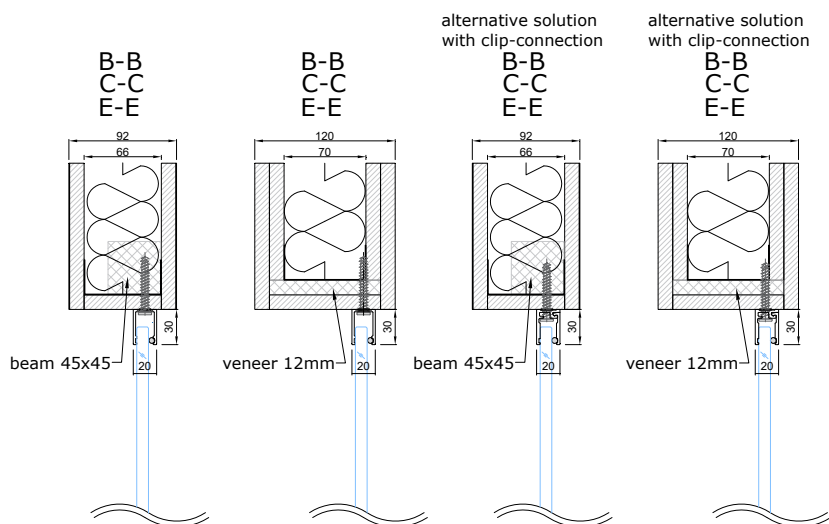


info@structo.ee

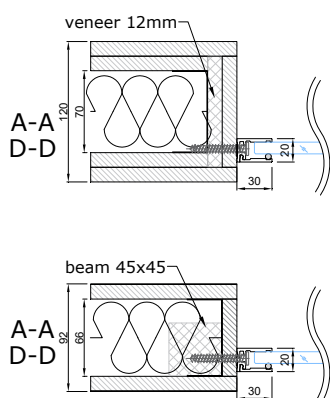


www.structo.ee

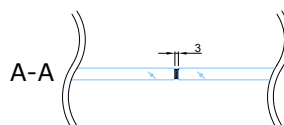
## CONNECTION WITH CEILING



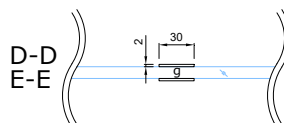
## CONNECTION WITH WALL



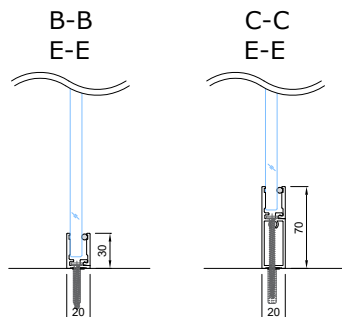
## CONNECTION WITH SIDE GLASS



## CONNECTION WITH DECOR PROFILES



## CONNECTION WITH FLOOR



- - seal, EPDM-50Dha\_5mm\_BLACK
- g - glued connection
- - seal, FIX-SEAL/S 3x10mm, black
- - AFTC double-sided tape, 2,5x5mm / 3x7mm / 3x10mm, colourless



+372 666 5017

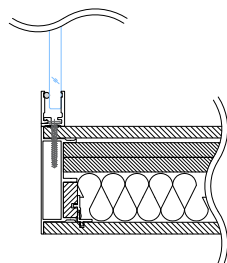


info@structo.ee

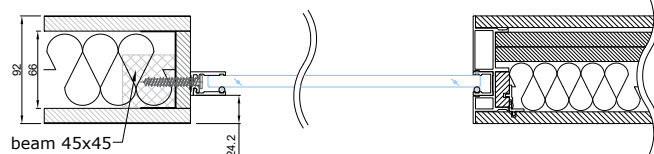


www.structo.ee

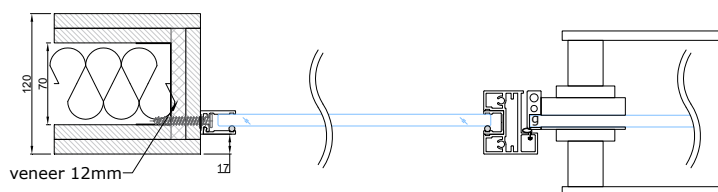
### 90° CONNECTION UNIT WITH PORTAL PORTA-92A OR ELZONE-92A



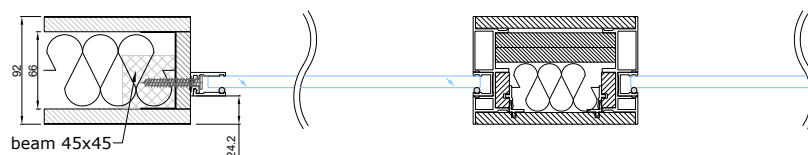
### CONNECTION WITH PORTAL PORTA-92A



### CONNECTION WITH PORTAL PORTA-53



### CONNECTION WITH WALL ELZONE-92A



+372 666 5017



info@structo.ee



www.structo.ee