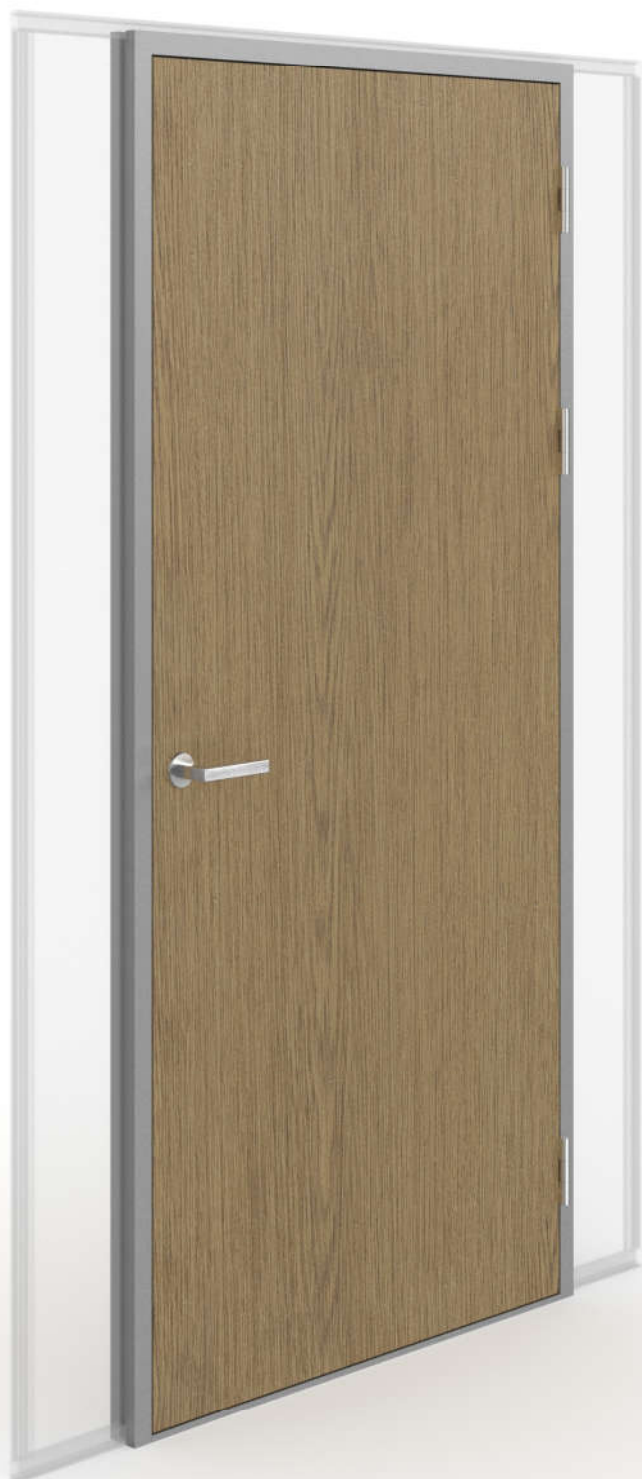


structo

WALL
SYSTEMS



WOODEN DOOR WITH
ALUMINUM FRAME

FITS PERFECTLY WITH
A FULL GLASS WALL

PORTA – 53W

Maximum external
dimensions of the
product (width x height):

1090 x 2500 mm



+372 666 5017



info@structo.ee



www.structo.ee

PORTA-53W | TECHNICAL DESCRIPTION



PORTA-53W is a portal system with wooden door and aluminum frame.

The letter "W" in the product name means a door frame without overlight and a wooden door panel.

The portal can be assembled with 2 different door panels:

- SU-010 is a door panel with a thickness of 41 mm.
- SU-050 is a door panel with a thickness of 54.5 mm.

Standard single-panel door frame widths are: M7 (690mm), M8 (790mm), M9 (890mm), M10 (990mm). The standard door frame height is M21 (2090mm). It is also possible to order paired doors, double doors, doors with glass openings and doors of special size.

Possible coatings for the door panel are:

- painted according to RAL, NCS or Tikkurila colour catalogues.
- covered with natural or technical veneer, which may be stained and varnished, varnished with tinted varnish or painted.
- laminated (the edges of the door panel are either veneered or painted).

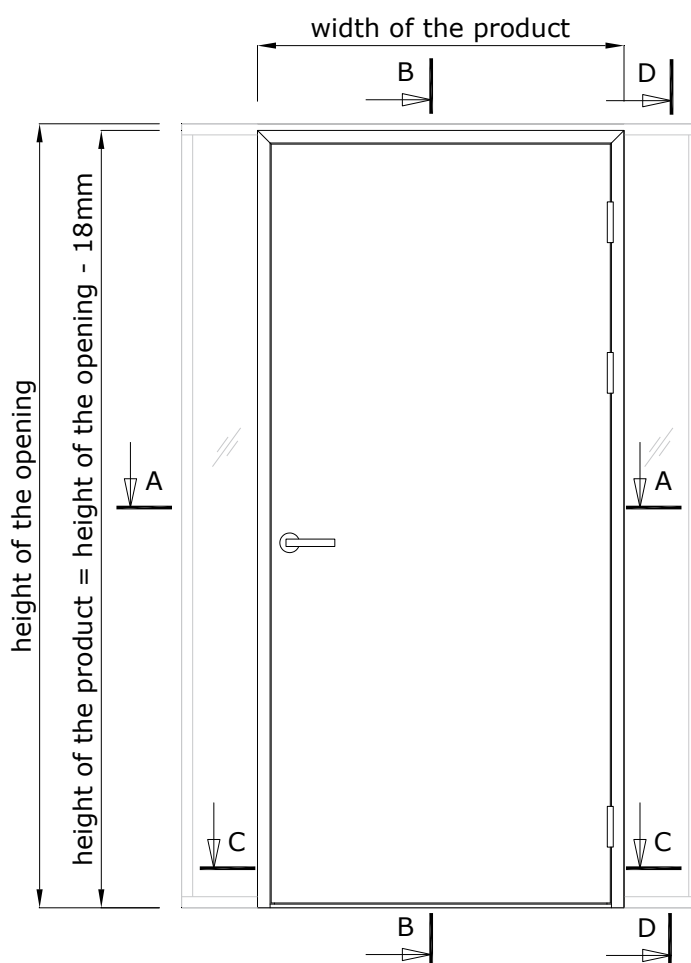
The door frames are made of aluminum. The standard surface finish of aluminum profiles is natural (silver) anodizing but it is also possible to order a painted surface according to the RAL colour catalogue.

The thresholds are made of oak. It is also possible to order an automatically descending seal.

The standard lock case is ASSA 565-50 and the counterpart ASSA 2864. It is also possible to order other lock cases and counterparts.

The standard solution uses Abloy 3248 hinges. Other hinges can also be used (incl. hidden hinges).

Openable side section ELZONE-92A can be installed on one or both sides of PORTA-53W, which is ideal for connectors, switches, cabling, etc. Minimum width of the side section when installing electrical accessories is 140mm. More information about side sections under the product "ELZONE-92A".



Maximum external dimensions of product (width x height):	1090 x 2500 mm
Minimum solid door panel width:	250 mm
Minimum door panel width with a glass opening:	560 mm



+372 666 5017



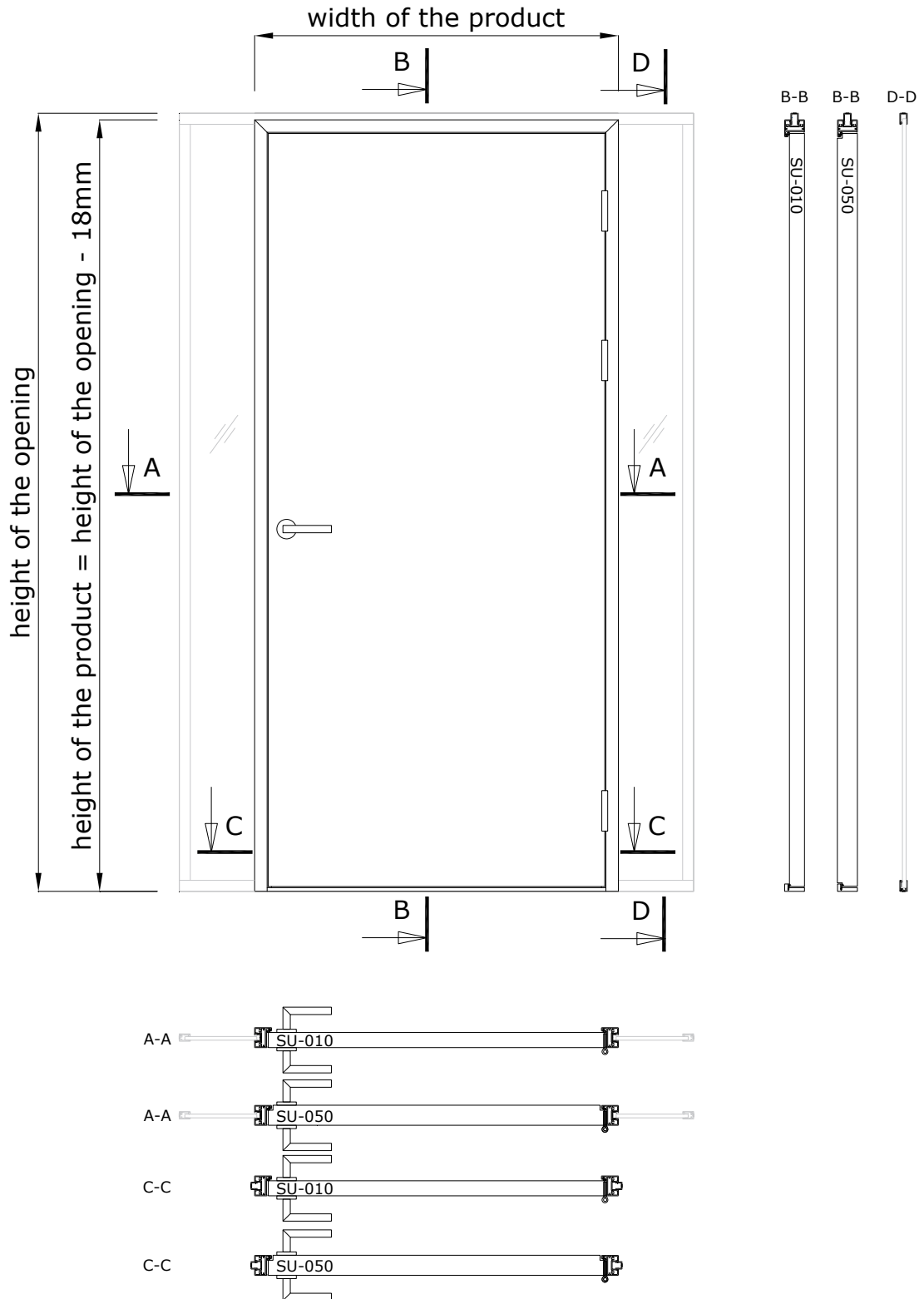
info@structo.ee



www.structo.ee

PORTA-53W

WITH INWARDS OPENING
DOOR PANEL



+372 666 5017



info@structo.ee

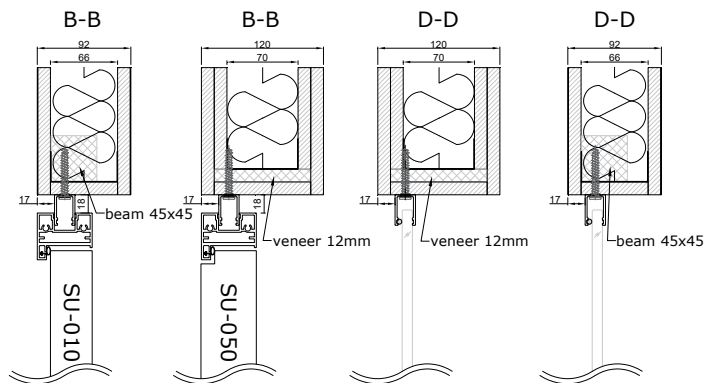


www.structo.ee

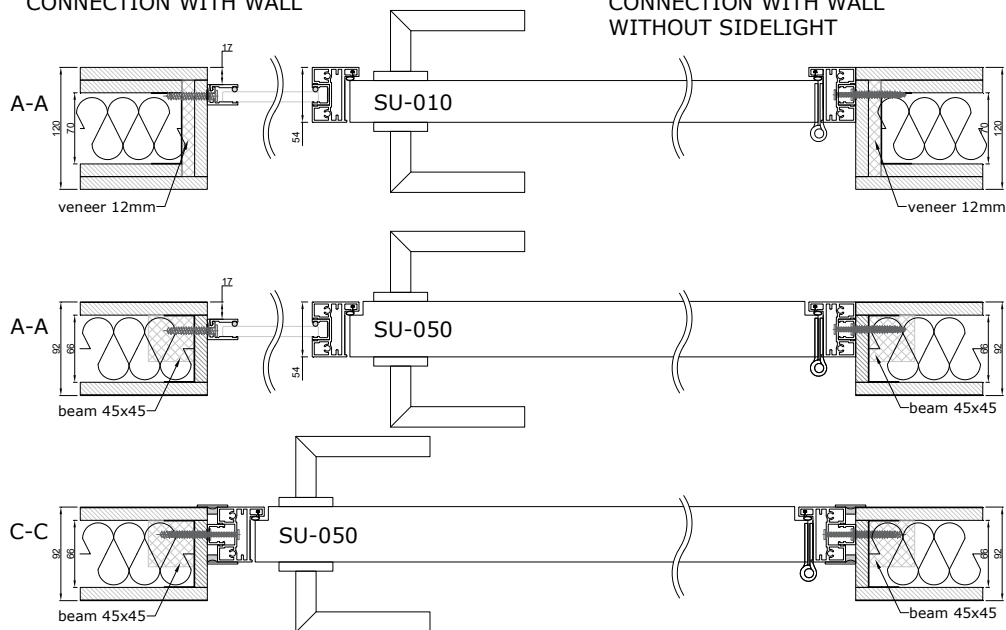
PORTA-53W | CONNECTION UNITS



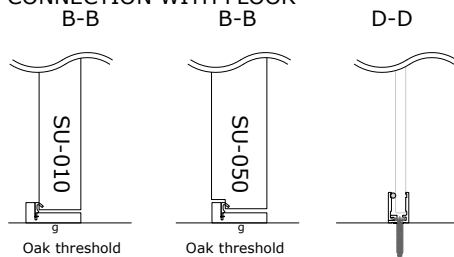
CONNECTION WITH CEILING



CONNECTION WITH WALL



CONNECTION WITH FLOOR



- - seal, EPDM-50Dha_5mm_BLACK
- g - glued connection
- ¶ - seal, VS118/8 black, white, dark gray
- | - seal, FIX-SEAL/S 3x10mm, black
- - mastic sealant (optional when better soundproofing is required)
- ⌒ - QL3094, RAL9005 black, RAL9003 white, RAL7001 silver gray, RAL8017 bronze



+372 666 5017



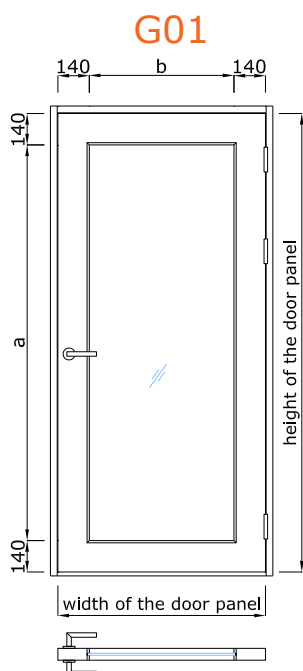
info@structo.ee



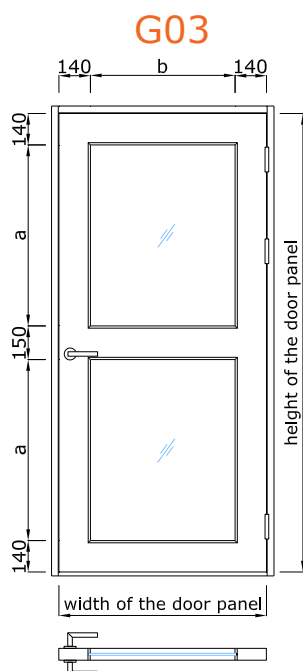
www.structo.ee

PORTA-53W

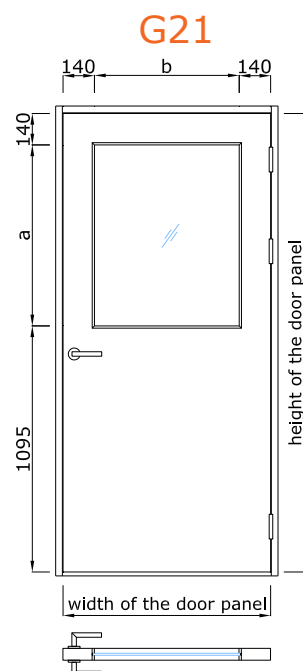
DOOR PANELS WITH GLASS OPENINGS



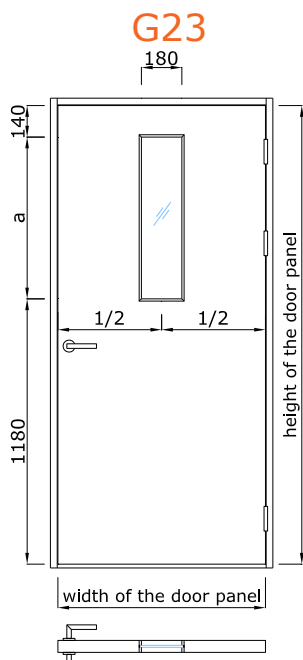
a = height of the door panel - 280mm
b = width of the door panel - 280mm



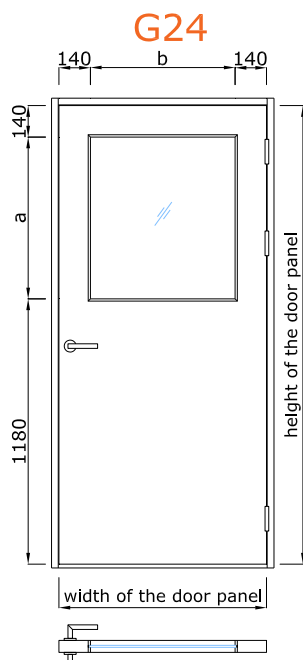
a = (height of the door panel - 430mm) / 2
b = width of the door panel - 280mm



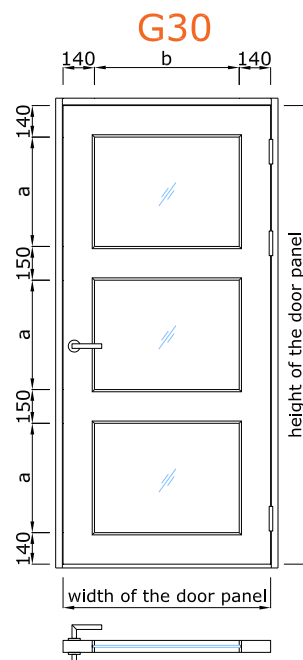
a = height of the door panel - 1235mm
b = width of the door panel - 280mm



a = height of the door panel - 1320mm



a = height of the door panel - 1320mm
b = width of the door panel - 280mm



a = (height of the door panel - 580mm) / 3
b = width of the door panel - 280mm



+372 666 5017



info@structo.ee



www.structo.ee