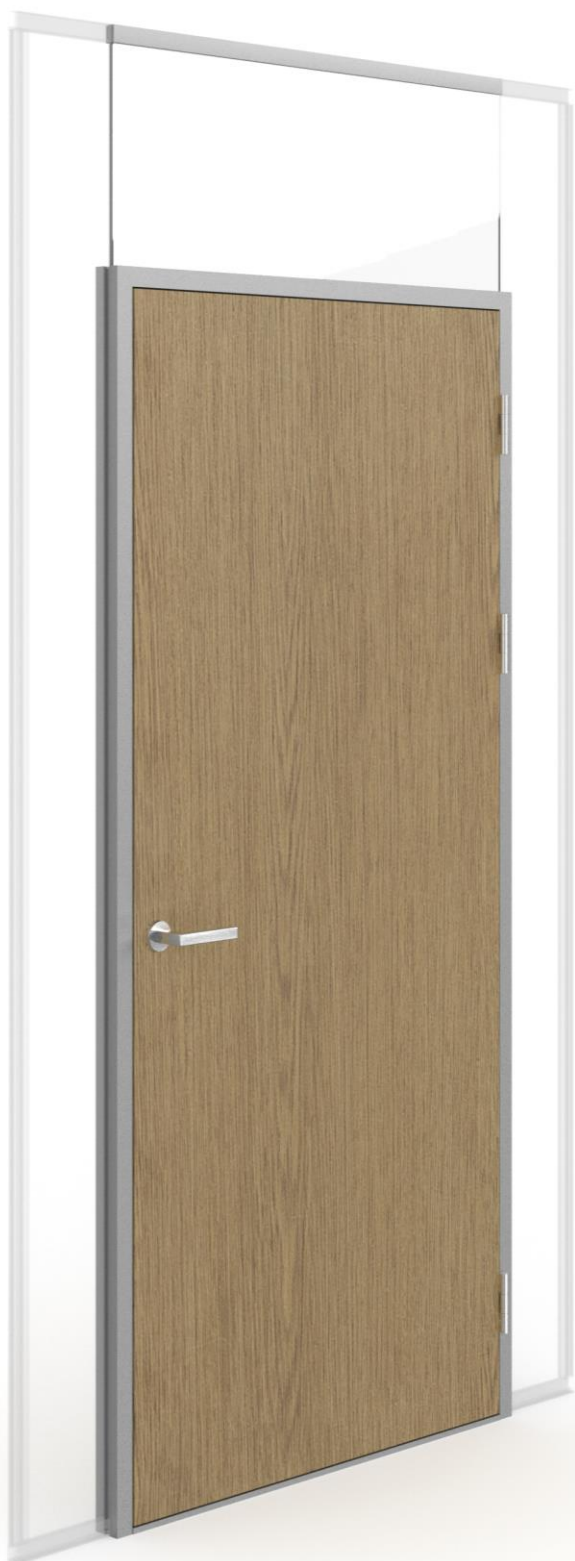


structo

WALL
SYSTEMS



WOODEN DOOR WITH
ALUMINUM DOOR FRAME
AND OVERLIGHT WITHOUT
VERTICAL PROFILES

FITS PERFECTLY WITH A FULL
GLASS WALL

PORTA—53WF

Maximum external dimensions of the product (width x height):	1090 x 3000 mm
Maximum external dimensions of the door frame (width x height):	1090 x 2390 mm



+372 666 5017



info@structo.ee



www.structo.ee

PORTA-53WF | TECHNICAL DESCRIPTION



PORTA-53WF is portal system with wooden door and aluminum frame.

The symbol "WF" in the product name means a door frame with an overlight and a wooden door panel. The glass of the overlight is connected to the adjacent glasses with glass tape.

The portal can be assembled with 2 different door panels:

- SU-005 is a door panel with a thickness of 41 mm.
- SU-050 is a door panel with a thickness of 53 mm.

Standard single-panel door frame widths are: M7 (690mm), M8 (790mm), M9 (890mm), M10 (990mm). The standard door frame height is M21 (2090mm). It is also possible to order paired doors, double doors, doors with glass openings and doors of special size.

Possible coatings for the door panel are:

- painted according to RAL, NCS or Tikkurila colour catalogues.
- covered with natural or technical veneer, which may be stained and varnished, varnished with tinted varnish or painted.
- laminated (the edges of the door panel are either veneered or painted).

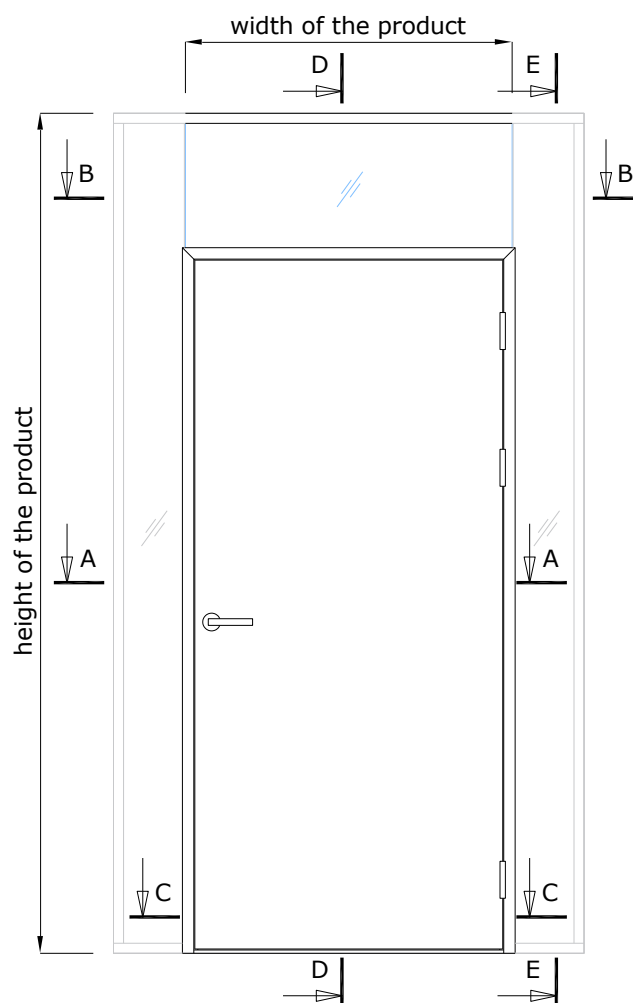
The door frames are made of aluminum. The standard surface finish of aluminum profiles is natural (silver) anodizing but it is also possible to order a painted surface according to the RAL colour catalogue.

The thresholds are made of oak. It is also possible to order an automatically descending seal.

The standard lock case is ASSA 565-50 and the counterpart ASSA 2864. It is also possible to order other lock cases and counterparts.

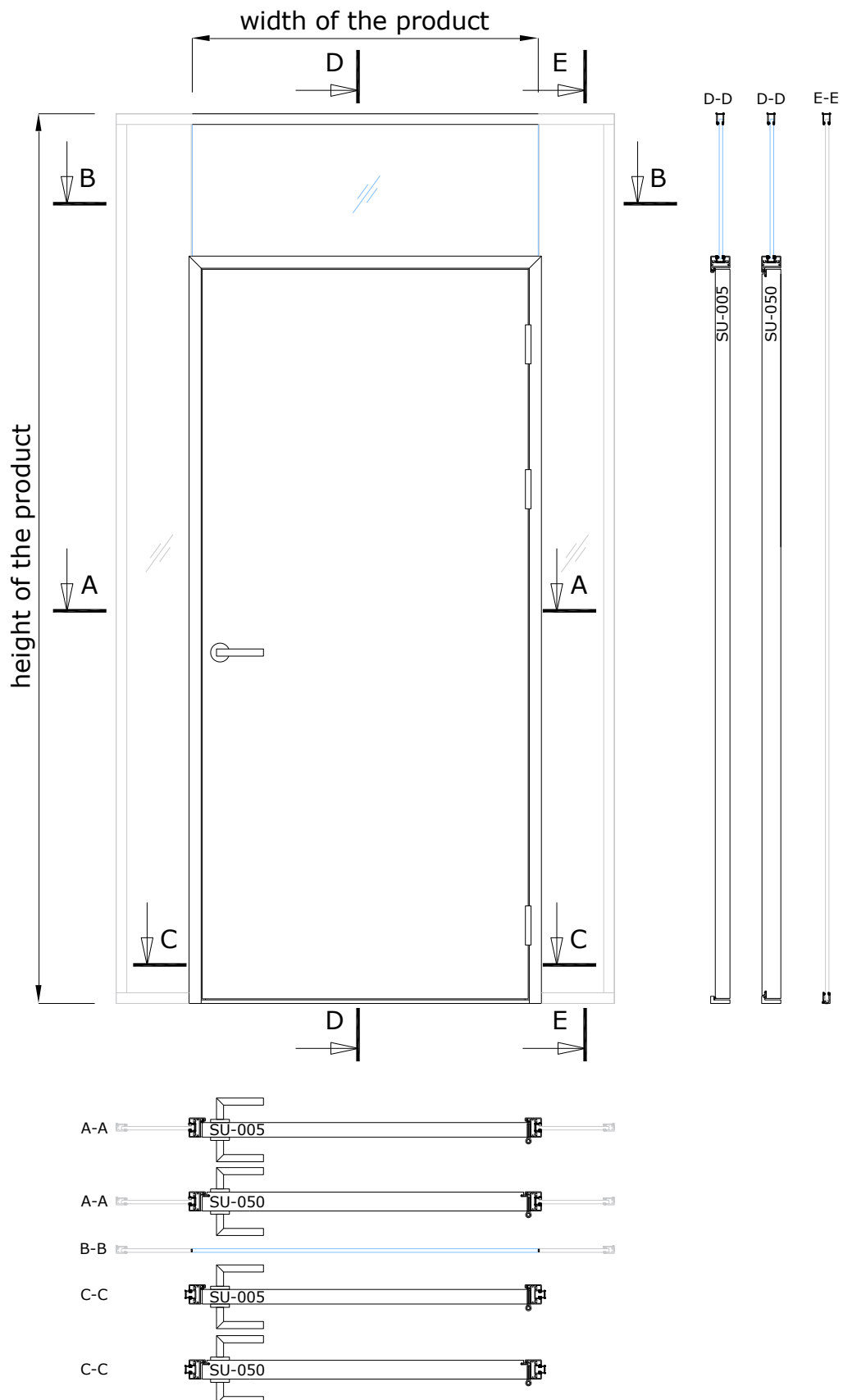
The standard solution uses Abloy 3248 hinges. Other hinges can also be used (incl. hidden hinges).

Openable side section ELZONE-92A can be installed on one or both sides of PORTA-53WF, which is ideal for connectors, switches, cabling, etc. Minimum width of the side section when installing electrical accessories is 140mm. More information about side sections under the product "ELZONE-92A".



Maximum external dimensions of the door frame (width x height):	1090 x 2390 mm
Maximum external dimensions of the product (width x height):	1090 x 3000 mm
Minimum solid door panel width:	250 mm
Minimum door panel width with a glass opening:	560 mm

PORTA-53WF WITH INWARDS OPENING DOOR PANEL



+372 666 5017

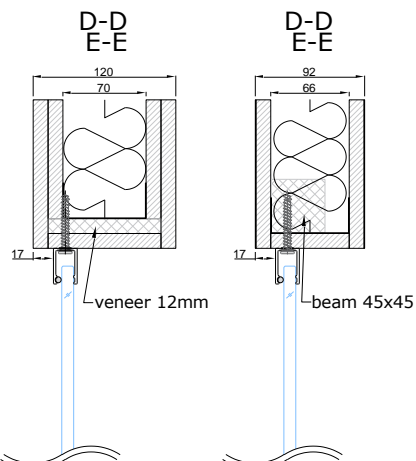


info@structo.ee

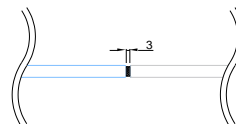


www.structo.ee

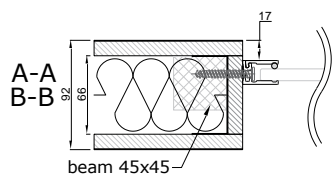
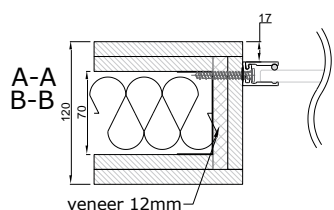
CONNECTION WITH CEILING



CONNECTION WITH SIDE GLASS

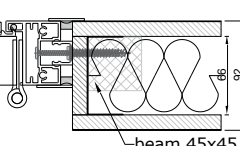
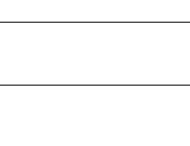
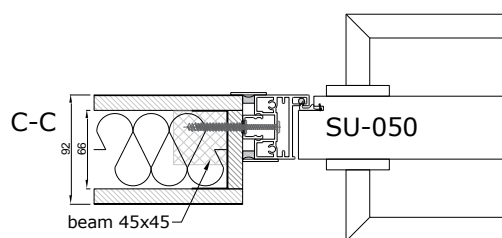
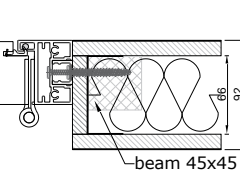
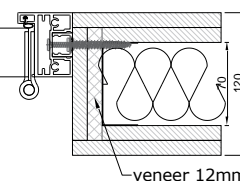
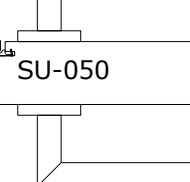
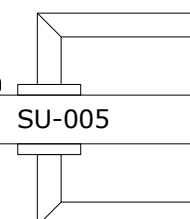
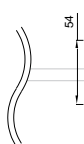


CONNECTION WITH WALL

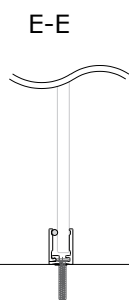
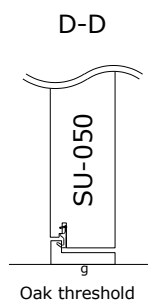
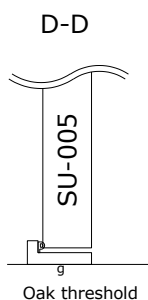


A-A

A-A



CONNECTION WITH FLOOR



- - seal, EPDM-50Dha_5mm_BLACK
- g - glued connection
- 3 - seal, VS118/8 black, white, dark gray
- - seal, FIX-SEAL/S 3x10mm, black
- - mastic sealant (optional when better soundproofing is required)
- 3 - QL3094, RAL9005 black, RAL9003 white, RAL7001 silver gray, RAL8017 bronze
- - AFTC double-sided tape, 2,5x5mm / 3x7mm / 3x10mm, colourless



+372 666 5017



info@structo.ee

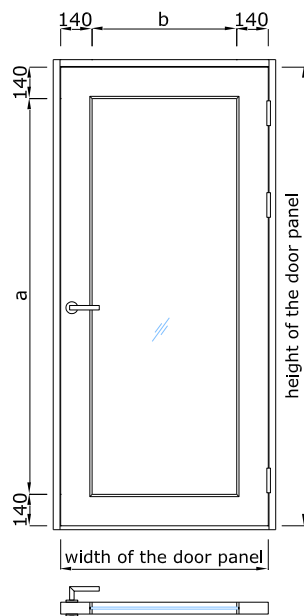


www.structo.ee

PORTA-53WF | DOOR PANELS WITH GLASS OPENINGS

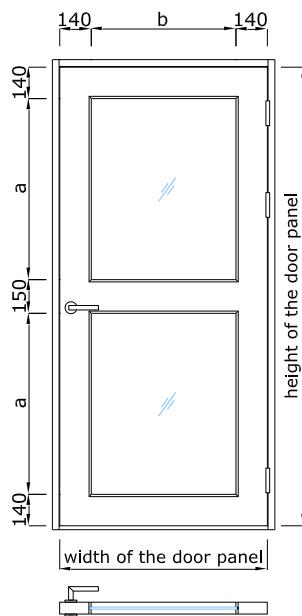


G01



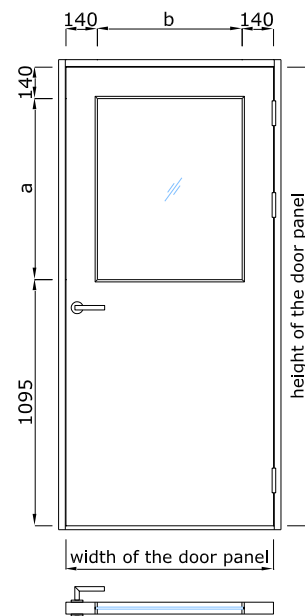
a = height of the door panel - 280mm
b = width of the door panel - 280mm

G03



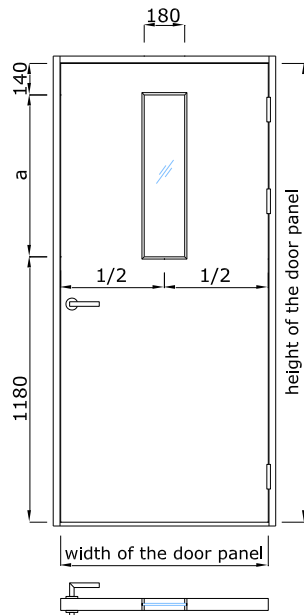
a = (height of the door panel - 430mm) / 2
b = width of the door panel - 280mm

G21



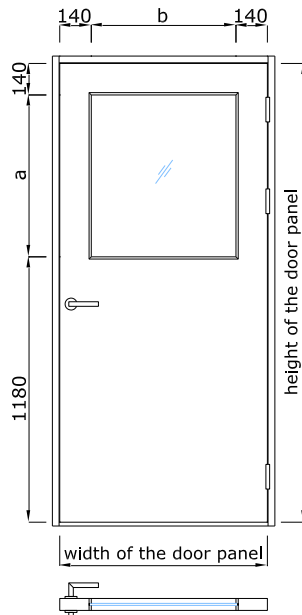
a = height of the door panel - 1235mm
b = width of the door panel - 280mm

G23



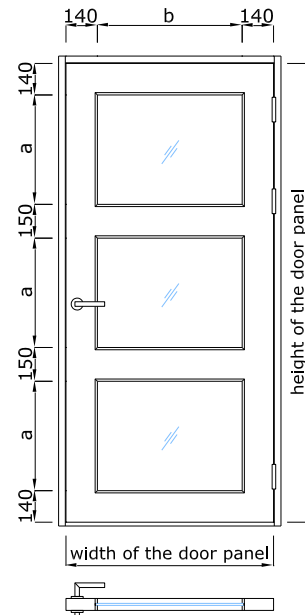
a = height of the door panel - 1320mm

G24



a = height of the door panel - 1320mm
b = width of the door panel - 280mm

G30



a = (height of the door panel - 580mm) / 3
b = width of the door panel - 280mm



+372 666 5017



info@structo.ee



www.structo.ee