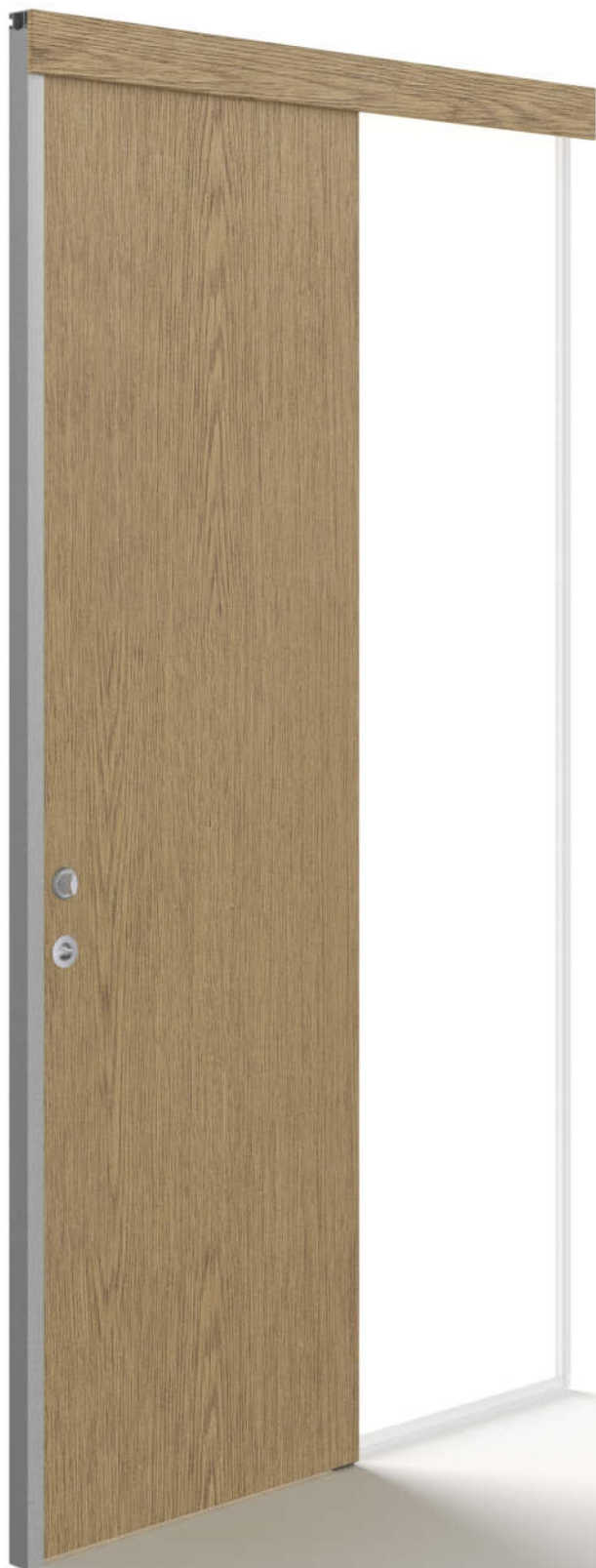


structo

WALL
SYSTEMS



FITS PERFECTLY WITH
GLASS WALLS

WOODSLIDE – 41

Maximum door height:	2400 mm
Maximum door panel width:	1000 mm



+372 666 5017



info@structo.ee



www.structo.ee

WOODSLIDE-41 | TECHNICAL DESCRIPTION



WOODSLIDE-41 is a wooden sliding door with a thickness of 41mm.

Standard handle is a pull handle SE 300/15B or built-in handle ETNA 28x163, but it is also possible to use other handles.

Possible coatings for door panels and panels are:

- painted according to RAL, NCS or Tikkurila colour catalogues.
- covered with natural or technical veneer, which may be stained and varnished, varnished with tinted varnish or painted.
- laminated (the edges of the door panel are either veneered or painted).

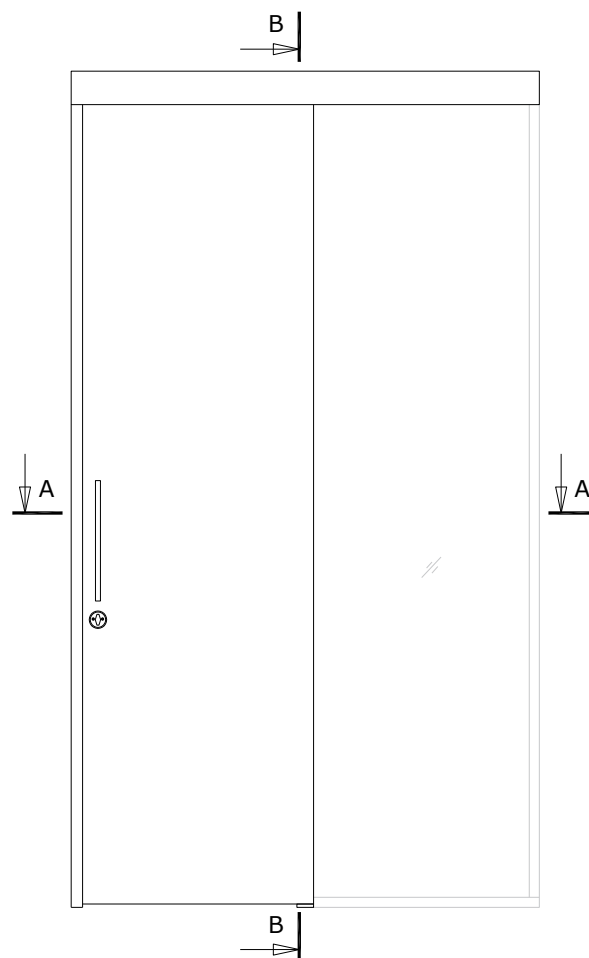
The standard surface finish of aluminum profiles is natural (silver) anodizing, but it is also possible to order a painted surface according to the RAL colour catalogue.

Door panels are available as single or pair doors and can be with or without glass openings.

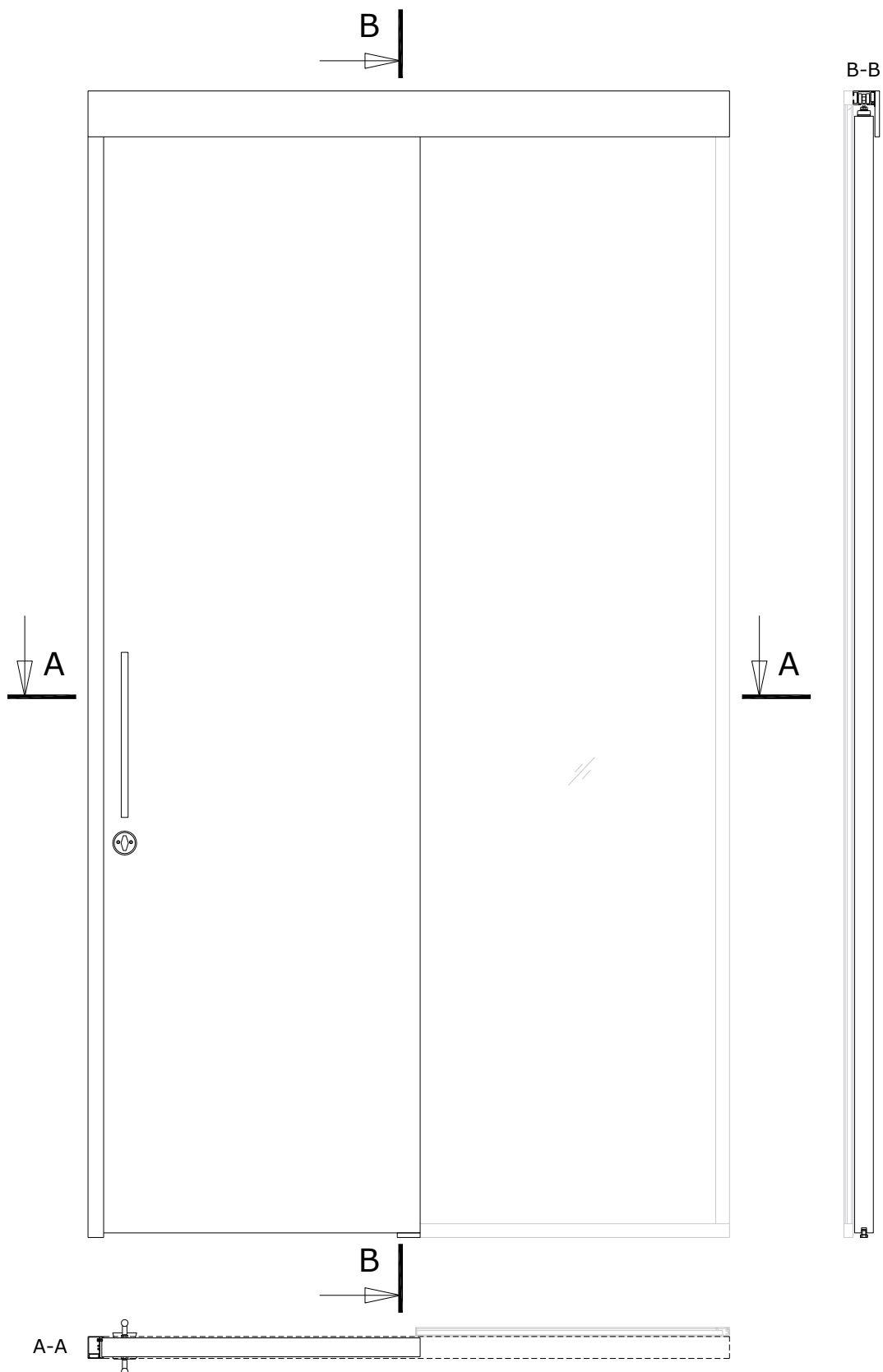
The standard lock case is ASSA 311-50 and the counterpart FGD53. It is also possible to order other lock cases and counterparts.

Structures adjacent to the product must be strong enough to allow profiles to be attached to them.

Maximum door height:	2400 mm
Maximum door panel width:	1000 mm



WOODSLIDE-41 | STANDARD SOLUTION



+372 666 5017

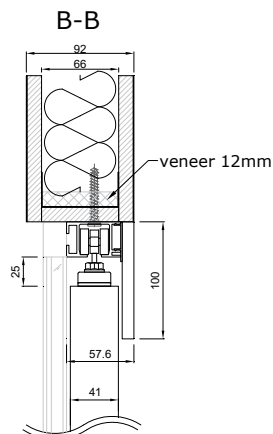


info@structo.ee

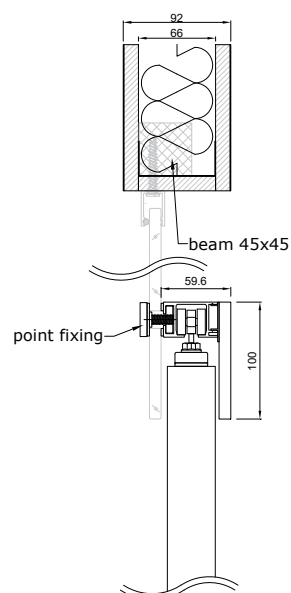


www.structo.ee

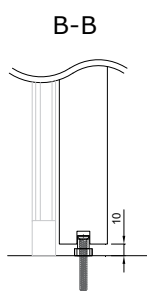
CONNECTION WITH CEILING



CONNECTION WITH UPPER OVERLIGHT

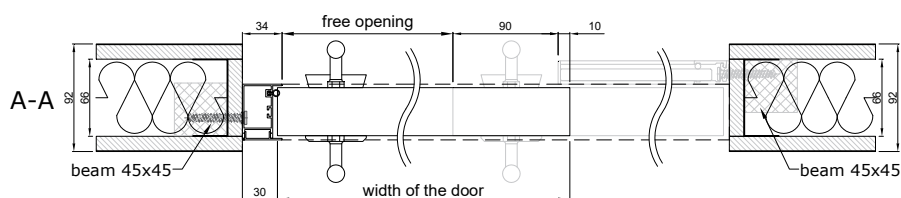


CONNECTION WITH FLOOR

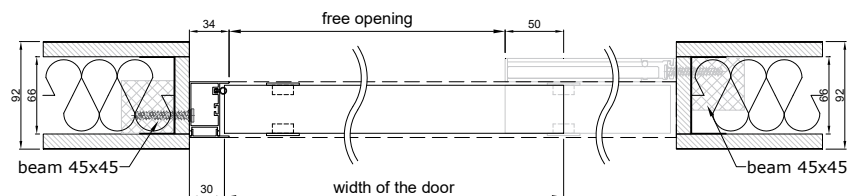


- - seal, EPDM-50Dha_5mm_BLACK
- ⊗ - seal, VS118/8 black, white, dark gray
- ┃ - seal, FIX-SEAL/S 3x10mm, black

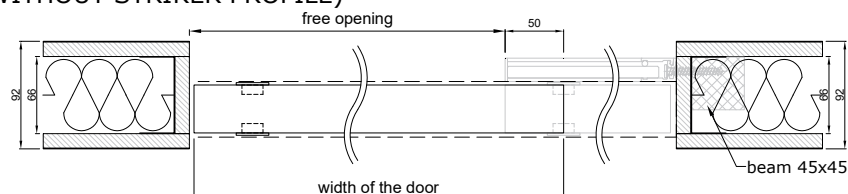
CONNECTION WITH WALL (WITH LOCKING AND PULL HANDLES)



CONNECTION WITH WALL (WITH BUILT-IN HANDLES)



CONNECTION WITH WALL (WITH BUILT-IN HANDLES AND WITHOUT STRIKER PROFILE)



+372 666 5017

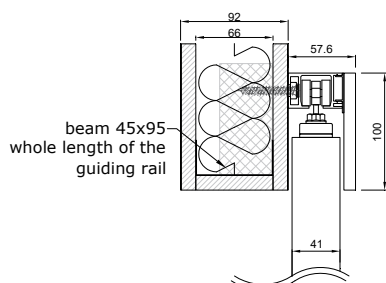


info@structo.ee



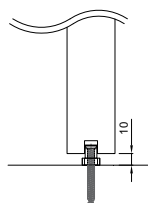
www.structo.ee

CONNECTION WITH CEILING

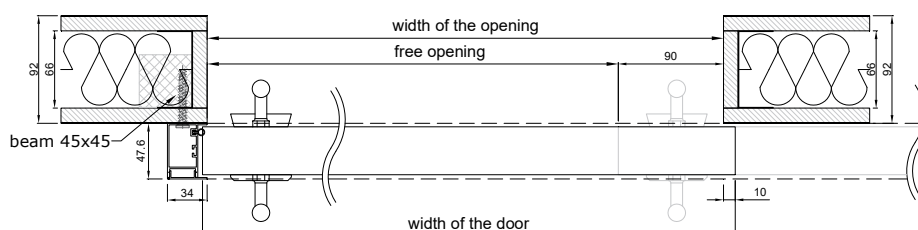


⊗ - seal, VS118/8 black, white, dark gray

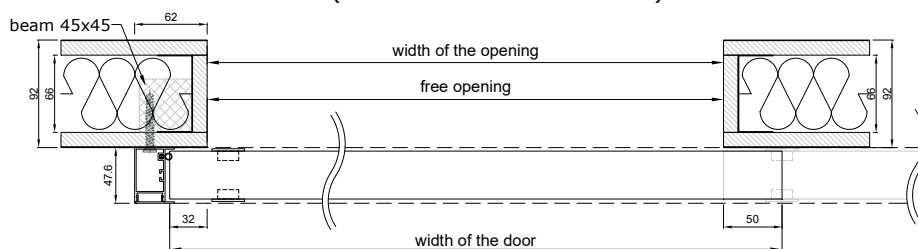
CONNECTION WITH FLOOR



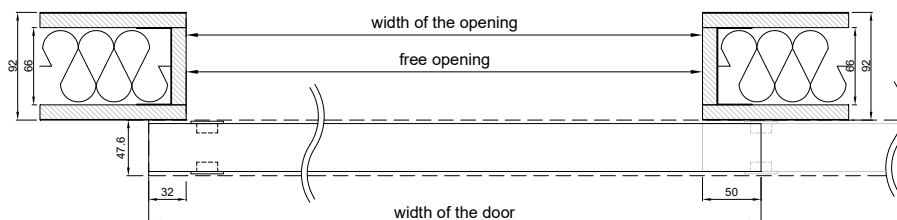
CONNECTION WITH WALL (WITH LOCKING AND PULL HANDLES)



CONNECTION WITH WALL (WITH BUILT-IN HANDLES)



CONNECTION WITH WALL (WITH BUILT-IN HANDLES AND WITHOUT STRIKER PROFILE)



+372 666 5017

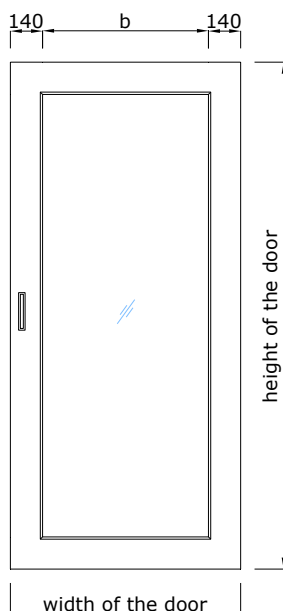


info@structo.ee



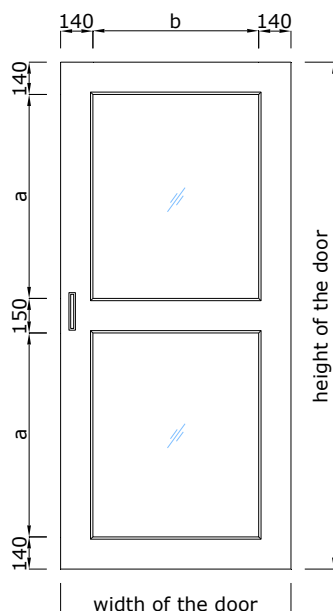
www.structo.ee

G01



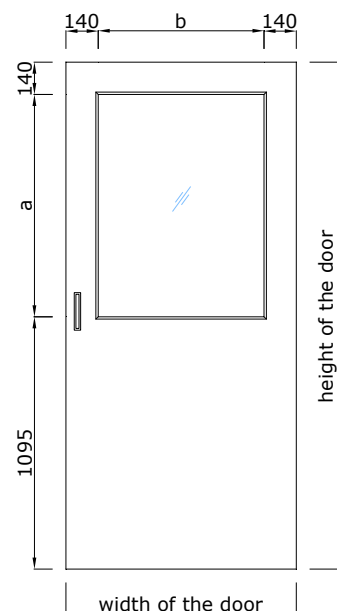
= height of the door - 280mm
= width of the door - 280mm

G03



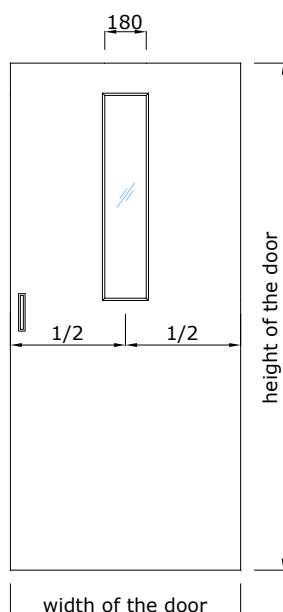
$a = (\text{height of the door} - 430\text{mm}) / 2$
 $b = \text{width of the door} - 280\text{mm}$

G21



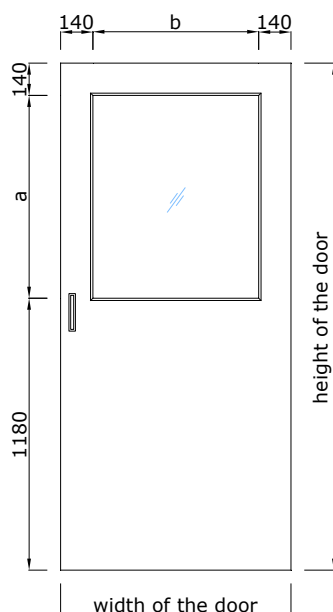
$a = \text{height of the door} - 1235\text{mm}$
 $b = \text{width of the door} - 280\text{mm}$

G23



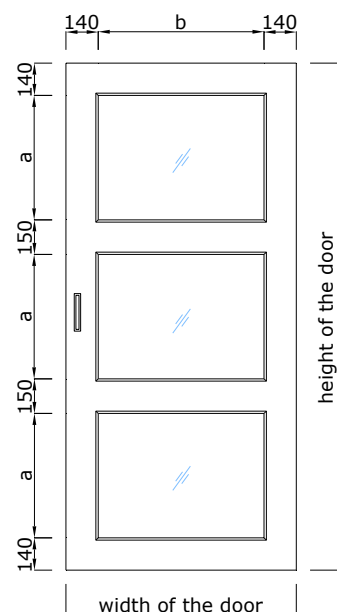
= height of the door - 1320mm

G24



$a = \text{height of the door} - 1320\text{mm}$
 $b = \text{width of the door} - 280\text{mm}$

G30



$a = (\text{height of the door} - 580\text{mm}) / 3$
 $b = \text{width of the door} - 280\text{mm}$



+372 666 5017



info@structo.ee



www.structo.ee