

# structo

WALL  
SYSTEMS



CLASSICAL DESIGN

FACTORY ASSEMBLED  
MODULES

## MODULE – S32

Maximum module height:	3000 mm
Maximum module width:	1500 mm
Suitable glasses with a thickness:	6 – 8,76 mm
Vertical profile dimensions (width x height)	40 x 32 mm



+372 666 5017



info@structo.ee



www.structo.ee

# MODULE - S32 | TECHNICAL DESCRIPTION



MODULE-S32 is an aluminum framed glass module for glasses between 6 – 8,76mm.

Vertical profile dimensions are 40 x 32mm.

Installation process is swift and simple due to factory assembled modules.

The standard surface finish of aluminum profiles is natural (silver) anodizing but it is also possible to order a painted surface according to the RAL colour catalogue.

Possible types of glass are tempered, laminated or tempered-laminated.

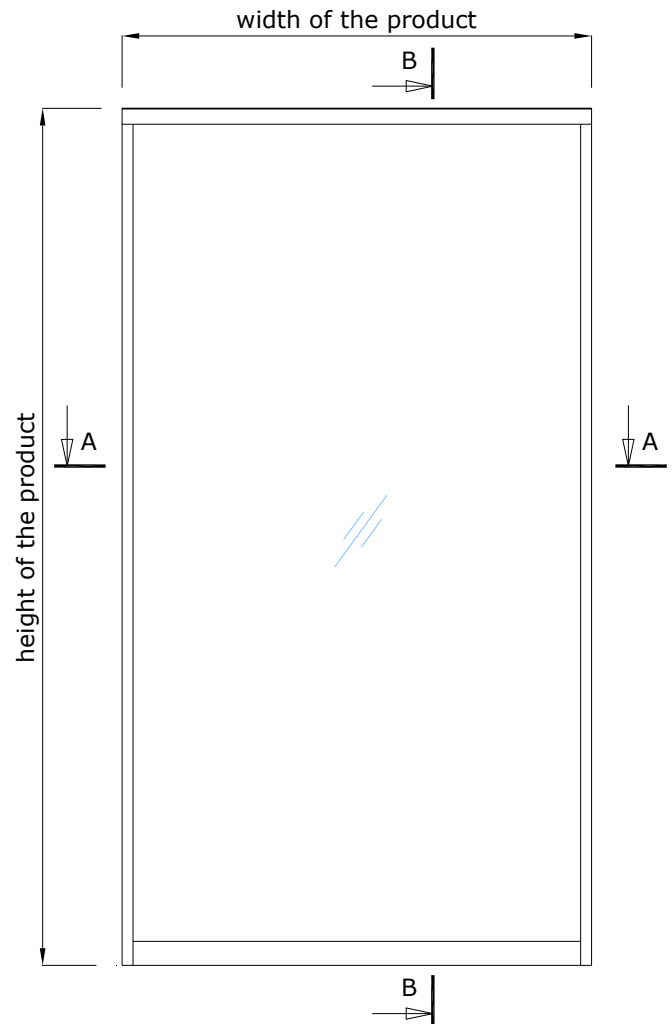
The surface of the glass can be bright, very bright, mass-tinted, background-painted or matte.

The standard floor profile height is 25mm, but it is also possible to choose a 70mm profile with the same width.

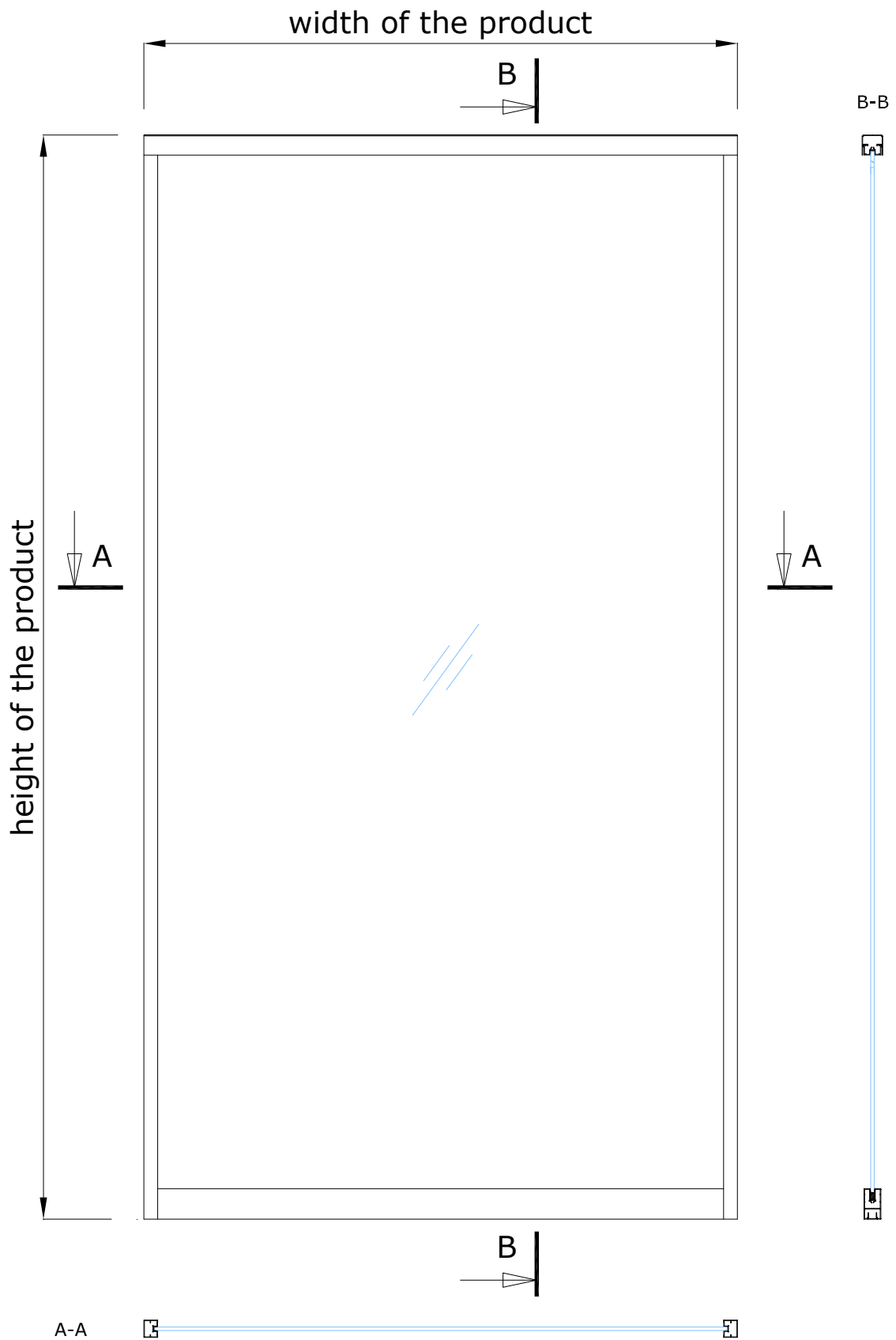
A transparent U-gasket is used as the glass seal. 44.2 laminated glass will be glued to the frame.

The structures adjacent to the product must be strong enough to allow profiles to be attached to them.

Maximum module height:	<b>3000 mm</b>
Maximum module width:	<b>1500 mm</b>
Suitable glasses with a thickness:	<b>6 – 8,76 mm</b>
Vertical profile dimensions (width x height)	<b>40 x 32 mm</b>



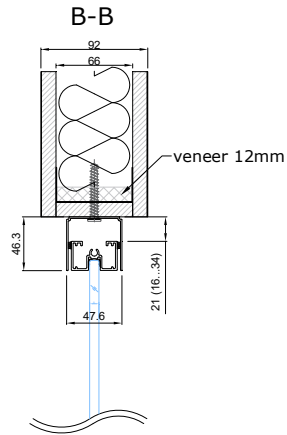
# MODULE - S32 | STANDARD SOLUTION



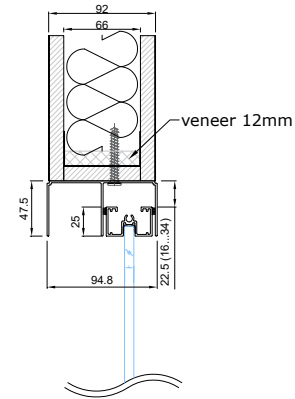
# MODULE - S32 | CONNECTION UNITS



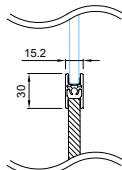
## CONNECTION WITH CEILING



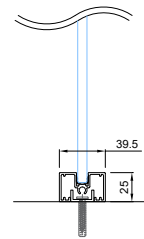
## CONNECTION WITH CEILING USING E-PROFILE



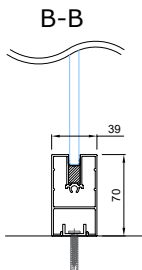
## OPTIONAL MIDDLE CONNECTION WITH H-PROFILE FOR CONNECTING DIFFERENT MATERIALS



## CONNECTION WITH FLOOR WITH LOW FLOOR PROFILE

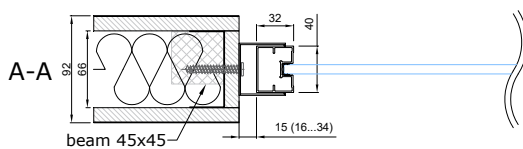


## CONNECTION WITH FLOOR

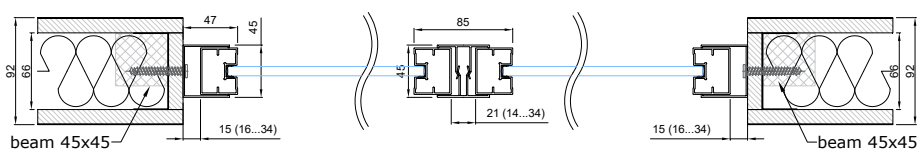


- seal, LU6, transparent
- draught brush
- seal, FIX-SEAL/S 3x10mm, black

## CONNECTION WITH WALL



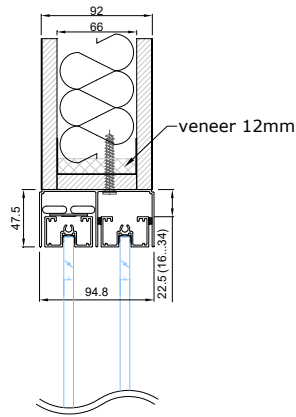
## CONNECTION WITH ADJACENT MODULE



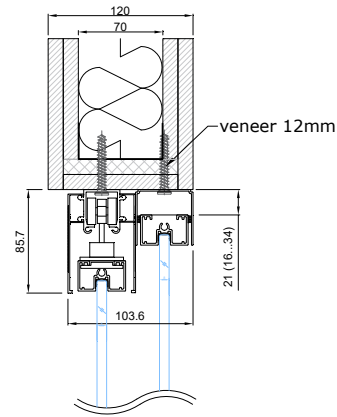
# MODULE - S32 | CONNECTION UNITS



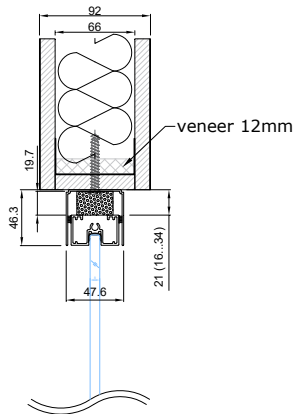
CEILING CONNECTION WITH FLOORSLIDE



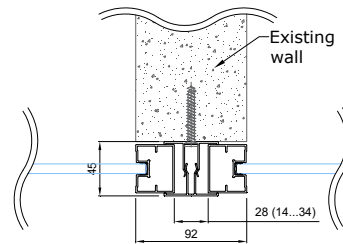
CEILING CONNECTION WITH TOPSLIDE



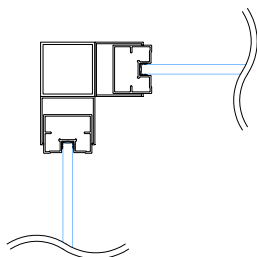
ALTERNATIVE MORE SOUNDPROOF CONNECTION WITH CEILING  
B-B



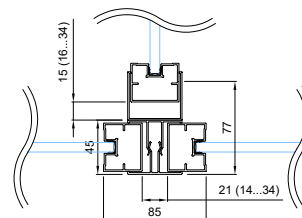
CONNECTION WITH EXISTING WALL (021/022)



90 DEGREE CORNER CONNECTION WITH 45x45 PROFILE



T-CONNECTION



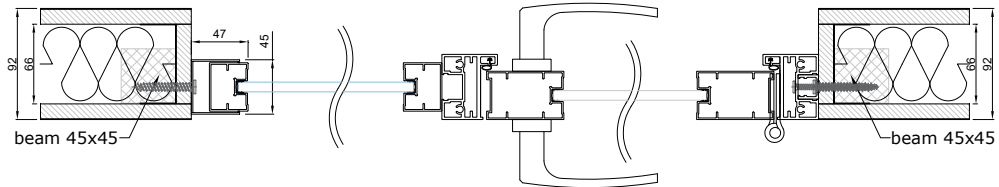
- ☐ - seal, LU6, transparent
- ▒ - draught brush
- | - seal, FIX-SEAL/S 3x10mm, black
- - self expanding foam

# MODULE - S32

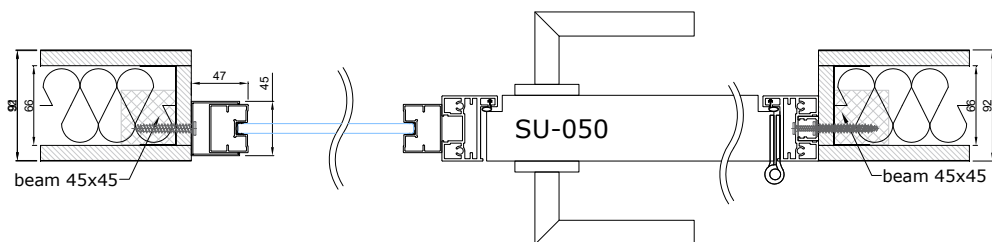
## CONNECTION UNITS WITH COMPATIBLE PRODUCTS



### CONNECTION WITH PORTA-53S



### CONNECTION WITH PORTA-53W



- ☐ - seal, LU6, transparent
- ▨ - draught brush
- ┃ - seal, FIX-SEAL/S 3x10mm, black